

Technical Report [1190 Glyphs]

# ABeZeh

ABeZeh Thin Italic

ABeZeh ExtraLight Italic

ABeZeh Light Italic

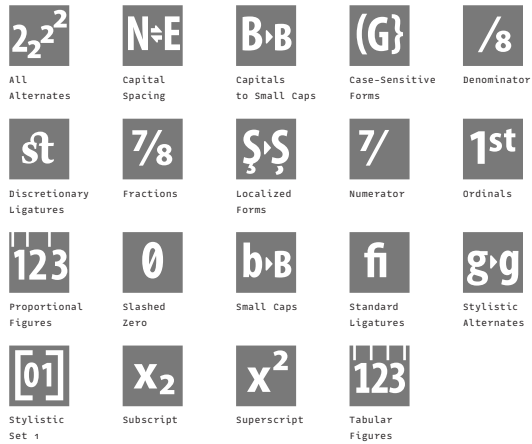
ABeZeh Italic

ABeZeh Medium Italic

ABeZeh Bold Italic

ABeZeh ExtraBold Italic

## OT-Features, Scripts & Languages



### Supported Script(s):

Latin  
Cyrillic  
Greek

### 57 languages and many more:

Afrikaans, Albanian, Basque, Bosnian, Breton, Bulgarian, Corsican, Croatian, Czech, Danish, Dutch, English, Esperanto, Estonian, Faroese, Finnish, French, Galician, German, Greenlandic, Hungarian, Icelandic, Indonesian, Irish, Italian, Kurdish, Latvian, Leonese, Lithuanian, Luxembourgish, Malay, Malaysian, Malti, Manx, Norwegian, Occitan, Polish, Portuguese, Rhaeto-Romanic, Romanian, Russian, Sami, Scottish Gaelic, Serbian Latin, Slovak, Slovakian, Slovene, Slovenian, Sorbian (Lower), Sorbian (Upper), Spanish, Swahili, Swedish, Turkish, Turkmen, Ukrainian, Walloon

Code Pages (this overview can happen to be incomplete)

## Mac OS ##

Mac OS Central European

Mac OS Cyrillic

Mac OS Iceland

Mac OS Romanian

Mac OS Ukrainian

## MS Windows ##

MS Windows 1250 Central European

MS Windows 1251 Cyrillic

MS Windows 1252 Western (ANSI)

MS Windows 1254 Turkish

MS Windows 1257 Baltic

## ISO 8859 ##

ISO 8859-1 Latin 1 (Western)

ISO 8859-2 Latin 2 (Central Europe)

ISO 8859-3 Latin 3 (Tu, Malt, Gal, Esp)

ISO 8859-4 Latin 4 (Baltic)

ISO 8859-5 Cyrillic

ISO 8859-9 Latin 5 (Turkish)

ISO 8859-15 Latin 9

## Encoded Glyphs

Basic Latin (0000–007F)													
	!	"	#	\$	%	&	'	(	)	*	+	,	-
0020	0021	0022	0023	0024	0025	0026	0027	0028	0029	002A	002B	002C	002D
.	/	0	1	2	3	4	5	6	7	8	9	:	;
002E	002F	0030	0031	0032	0033	0034	0035	0036	0037	0038	0039	003A	003B
<	=	>	?	@	A	B	C	D	E	F	G	H	I
003C	003D	003E	003F	0040	0041	0042	0043	0044	0045	0046	0047	0048	0049
J	K	L	M	N	O	P	Q	R	S	T	U	V	W
004A	004B	004C	004D	004E	004F	0050	0051	0052	0053	0054	0055	0056	0057
X	y	Z	[	\	]	^	_	`	a	b	c	d	e
0058	0059	005A	005B	005C	005D	005E	005F	0060	0061	0062	0063	0064	0065
f	g	h	i	j	k	l	m	n	o	p	q	r	s
0066	0067	0068	0069	006A	006B	006C	006D	006E	006F	0070	0071	0072	0073
t	u	v	w	x	y	z	{		}	~			
0074	0075	0076	0077	0078	0079	007A	007B	007C	007D	007E			

Encoded Glyphs

Latin-1 Supplement (0080-00FF)													
ı	ç	£	¤	¥	ı	§	¨	©	ª	«	¬	-	®
00A1	00A2	00A3	00A4	00A5	00A6	00A7	00A8	00A9	00AA	00AB	00AC	00AD	00AE
-	°	±	²	³	´	µ	¶	·	¸	¹	º	»	¼
00AF	00B0	00B1	00B2	00B3	00B4	00B5	00B6	00B7	00B8	00B9	00BA	00BB	00BC
½	¾	¿	À	Á	Â	Ã	Ä	Å	Æ	Ç	È	É	Ê
00BD	00BE	00BF	00C0	00C1	00C2	00C3	00C4	00C5	00C6	00C7	00C8	00C9	00CA
Ë	Ì	Í	Î	Ï	Ð	Ñ	Ò	Ó	Ô	Õ	Ö	×	Ø
00CB	00CC	00CD	00CE	00CF	00D0	00D1	00D2	00D3	00D4	00D5	00D6	00D7	00D8
Ù	Ú	Û	Ü	Ý	Þ	ß	à	á	â	ã	ä	å	æ
00D9	00DA	00DB	00DC	00DD	00DE	00DF	00E0	00E1	00E2	00E3	00E4	00E5	00E6
ç	è	é	ê	ë	ì	í	î	ï	ð	ñ	ò	ó	ô
00E7	00E8	00E9	00EA	00EB	00EC	00ED	00EE	00EF	00F0	00F1	00F2	00F3	00F4
õ	ö	÷	ø	ù	ú	û	ü	ý	þ	ÿ			
00F5	00F6	00F7	00F8	00F9	00FA	00FB	00FC	00FD	00FE	00FF			

Encoded Glyphs

Latin Extended-A (0100–017F)																																			
Ā	ā	Ă	ă	Ą	ą	Ć	ć	Ĉ	ĉ	Ċ	ċ	Č	č	0100	0101	0102	0103	0104	0105	0106	0107	0108	0109	010A	010B	010C	010D								
Ď	ď	Đ	đ	Ē	ē	Ě	ě	Ė	ė	Ę	ę	Ě	ě	010E	010F	0110	0111	0112	0113	0114	0115	0116	0117	0118	0119	011A	011B								
Ĝ	ĝ	Ğ	ğ	Ġ	ġ	Ģ	ģ	Ĥ	ĥ	Ħ	ħ	Ĩ	ĩ	011C	011D	011E	011F	0120	0121	0122	0123	0124	0125	0126	0127	0128	0129								
Ī	ī	Ĳ	ĳ	Ĵ	ĵ	İ	ı	Ĳ	ĳ	Ĵ	ĵ	Ķ	ķ	012A	012B	012C	012D	012E	012F	0130	0131	0132	0133	0134	0135	0136	0137								
Ɔ	Ć	Ċ	Č	Ď	ď	Đ	đ	Ē	ē	Ě	ě	Ė	ė	Ę	ę	Ě	ě	Ķ	ķ	Ĳ	ĳ	0138	0139	013A	013B	013C	013D	013E	013F	0140	0141	0142	0143	0144	0145
ŋ	Ń	ń	Ņ	ņ	Ō	ō	Ŏ	ö	Ő	ő	Œ	œ	Ŕ	0146	0147	0148	014A	014B	014C	014D	014E	014F	0150	0151	0152	0153	0154								
ŕ	Ŗ	ŗ	Ř	ř	Ś	ś	Ŝ	ŝ	Ş	ş	Š	š	Ţ	0155	0156	0157	0158	0159	015A	015B	015C	015D	015E	015F	0160	0161	0162								

## Encoded Glyphs

ƚ	ř	ř	ƚ	ƚ	ũ	ũ	ū	ū	ŭ	ŭ	ů	ů	ů
0163	0164	0165	0166	0167	0168	0169	016A	016B	016C	016D	016E	016F	0170
ů	ų	ų	ŵ	ŵ	ÿ	ÿ	ÿ	ž	ž	ž	ž	ž	ž
0171	0172	0173	0174	0175	0176	0177	0178	0179	017A	017B	017C	017D	017E
Latin Extended-B (0180–024F)													
f	Ā	æ	ø	ø	š	š	ţ	ţ	J				
0192	01FC	01FD	01FE	01FF	0218	0219	021A	021B	0237				
Spacing Modifier Letters (02B0–02FF)													
ˆ	˘	˘	˙	◌	◌	˜	”						
02C6	02C7	02D8	02D9	02DA	02DB	02DC	02DD						
Combining Diacritical Marks (0300–036F)													
◌	◌	◌	◌	◌	◌	◌	◌	◌	◌	◌	◌	◌	◌
0300	0301	0302	0303	0304	0306	0307	0308	030A	030B	030C	0312	0326	0327
◌													
0328													
Greek and Coptic (0370–03FF)													
´	ˆ	Α	Ε	Η	Ι	Ο	Υ	Ω	ϊ	Α	Β	Γ	Δ
0384	0385	0386	0388	0389	038A	038C	038E	038F	0390	0391	0392	0393	0394

Encoded Glyphs

E 0395	Z 0396	H 0397	Θ 0398	I 0399	K 039A	Λ 039B	M 039C	N 039D	Ξ 039E	O 039F	Π 03A0	P 03A1	Σ 03A3
T 03A4	Υ 03A5	Φ 03A6	Χ 03A7	Ψ 03A8	Ω 03A9	İ 03AA	ÿ 03AB	ά 03AC	έ 03AD	ή 03AE	ί 03AF	ü 03B0	α 03B1
β 03B2	γ 03B3	δ 03B4	ε 03B5	ζ 03B6	η 03B7	θ 03B8	ι 03B9	κ 03BA	λ 03BB	μ 03BC	ν 03BD	ξ 03BE	ο 03BF
π 03C0	ρ 03C1	ς 03C2	σ 03C3	τ 03C4	υ 03C5	φ 03C6	χ 03C7	ψ 03C8	ω 03C9	ï 03CA	ÿ 03CB	ó 03CC	ú 03CD
ώ 03CE													
Cyrillic (0400-04FF)													
Ě 0401	Ғ 0402	Ѓ 0403	Є 0404	Ѕ 0405	І 0406	İ 0407	Ј 0408	Љ 0409	Њ 040A	Ң 040B	Ќ 040C	Ў 040E	Ҫ 040F
А 0410	Б 0411	В 0412	Г 0413	Д 0414	Е 0415	Ж 0416	З 0417	И 0418	Й 0419	К 041A	Л 041B	М 041C	Н 041D



## Encoded Glyphs

О	П	Р	С	Т	У	Ф	Х	Ц	Ч	Ш	Щ	Ъ	Ы
041E	041F	0420	0421	0422	0423	0424	0425	0426	0427	0428	0429	042A	042B
Ь	Э	Ю	Я	а	б	в	г	д	е	ж	з	и	й
042C	042D	042E	042F	0430	0431	0432	0433	0434	0435	0436	0437	0438	0439
К	Л	М	Н	О	п	р	с	т	у	ф	х	ц	ч
043A	043B	043C	043D	043E	043F	0440	0441	0442	0443	0444	0445	0446	0447
ш	щ	ъ	ы	ь	э	ю	я	ё	ђ	џ	є	ѕ	і
0448	0449	044A	044B	044C	044D	044E	044F	0451	0452	0453	0454	0455	0456
ї	ј	љ	њ	ћ	ќ	ђ	џ	Ѡ	ѡ	Ѵ	ѵ	Ѷ	ѷ
0457	0458	0459	045A	045B	045C	045E	045F	0462	0463	0472	0473	0474	0475
Ґ	ґ	ƒ	ƒ	Ж	ж	Қ	қ	Ң	ң	У	у	Ү	ү
0490	0491	0492	0493	0496	0497	049A	049B	04A2	04A3	04AE	04AF	04B0	04B1
Х	х	Ц	ц	h	h	l	l	ə	ə	Й	ū	Ө	ө
04B2	04B3	04B6	04B7	04BA	04BB	04C0	04CF	04D8	04D9	04E2	04E3	04E8	04E9

Encoded Glyphs

ȳ 04EE    ū 04EF

Latin Extended Additional (1E00-1EFF)

Ŵ 1E80    ŵ 1E81    Ŷ 1E82    ŷ 1E83    Ÿ 1E84    Ź 1E85    ß 1E9E    Ÿ 1EF2    ù 1EF3

Greek Extended (1F00-1FFF)

à 1F70    á 1F71    è 1F72    é 1F73    ñ 1F74    ñ 1F75    ì 1F76    í 1F77    ò 1F78    ó 1F79    ù 1F7A    ú 1F7B    ù 1F7C    ó 1F7D

ǎ 1FB0    ā 1FB1    ã 1FB6    Ā 1FB8    Ā 1FB9    À 1FBA    Á 1FBB    ~ 1FC0    ã 1FC1    ñ 1FC6    È 1FC8    É 1FC9    Ì 1FCA    Í 1FCB

ĩ 1FD0    ī 1FD1    ï 1FD2    ï 1FD3    ï 1FD6    ï 1FD7    ĭ 1FD8    ī 1FD9    ì 1FDA    í 1FDB    ŭ 1FE0    ū 1FE1    ü 1FE2    ü 1FE3

ũ 1FE6    ũ 1FE7    Ÿ 1FE8    Ÿ 1FE9    Ÿ 1FEA    Ÿ 1FEB    ˆ 1FED    ˆ 1FEE    ˆ 1FEF    ã 1FF6    Ò 1FF8    Ó 1FF9    Ò 1FFA    Ó 1FFB

ˆ 1FFD

## Encoded Glyphs

General Punctuation (2000–206F)													
—	—	—	‘	’	,	“	”	”	†	≠	•	…	‰
2012	2013	2014	2018	2019	201A	201C	201D	201E	2020	2021	2022	2026	2030
<	>	/											
2039	203A	2044											
Superscripts and Subscripts (2070–209F)													
0	<i>i</i>	4	5	6	7	8	9	+	-	=	(	)	<i>n</i>
2070	2071	2074	2075	2076	2077	2078	2079	207A	207B	207C	207D	207E	207F
0	1	2	3	4	5	6	7	8	9	+	-	=	(
2080	2081	2082	2083	2084	2085	2086	2087	2088	2089	208A	208B	208C	208D
)													
208E													
Currency Symbols (20A0–20CF)													
€													
20AC													
Letterlike Symbols (2100–214F)													
N <sup>o</sup>	™	Ω	e										
2116	2122	2126	212E										

## Encoded Glyphs

### Number Forms (2150–218F)

1/3

2153

2/3

2154

1/8

215B

3/8

215C

5/8

215D

7/8

215E

### Arrows (2190–21FF)



2190



2191



2192



2193



2194



2195



2196



2197



2198



2199

### Mathematical Operators (2200–22FF)



2202



2205



2206



220F



2211



2212



221A



221E



222B



2248



2260



2264



2265



22C6

### Geometric Shapes (25A0–25FF)



25CA

### Alphabetic Presentation Forms (FB00–FB4F)

ff

FB00

fi

FB01

fl

FB02

ffi

FB03

ffl

FB04

### Emoticons (1F600–1F64F)



1F600



1F609



1F610



1F612



1F61B

## Unencoded Glyphs

Small Capitals													
A a.sc	Á aacute.sc	Ă abreve.sc	Â acircumflex.sc	Ä adieresis.sc	À agrave.sc	Ā amacron.sc	Ą aogonek.sc	Å aring.sc	Ã atilde.sc	Æ ae.sc	É eacute.sc	B b.sc	C c.sc
Ć cacute.sc	Č ccaron.sc	Ç ccedilla.sc	Ĉ ccircumflex.sc	Ċ cdotaccent.sc	D d.sc	Ð eth.sc	Ď dcaron.sc	Đ dcroat.sc	E e.sc	É eacute.sc	Ě ebreve.sc	Ě ecaron.sc	Ê ecircumflex.sc
Ë edieresis.sc	È edotaccent.sc	È egrave.sc	Ē emacron.sc	Ę eogonek.sc	F f.sc	FF f_f.sc	FFH f_f_h.sc	FFI f_f_i.sc	FFJ f_f_j.sc	FFL f_f_l.sc	FH f_h.sc	FJ f_j.sc	FI fi.sc
FL fl.sc	G g.sc	Ğ gbreve.sc	Ĝ gcircumflex.sc	Ġ gcommaaccent.sc	Ģ gdotaccent.sc	H h.sc	Ħ hbar.sc	Ĥ hcircumflex.sc	I i.sc	Í iacute.sc	Ĳ ibreve.sc	Î icircumflex.sc	Ï idieresis.sc
Ì igrave.sc	IJ ij.sc	Ī imacron.sc	Ĳ iogonek.sc	Ĩ itilde.sc	J j.sc	Ĵ jcircumflex.sc	K k.sc	Ɔ kcommaaccent.sc	Ɔ kgreenlandic.sc	L l.sc	Ł lacute.sc	Ł lcaron.sc	Ł lcommaaccent.sc
Ł ldot.sc	Ł lslash.sc	M m.sc	N n.sc	Ń nacute.sc	Ñ ncaron.sc	Ņ ncommaaccent.sc	Ŋ eng.sc	Ñ ntilde.sc	O o.sc	Ó oacute.sc	Ö obreve.sc	Ô ocircumflex.sc	Ö odieresis.sc
Ò ograve.sc	Ő ohungarumlaut.sc	Ō omacron.sc	Ø oslash.sc	Ø oslashacute.sc	Õ otilde.sc	Œ oe.sc	P p.sc	Ɔ thorn.sc	Q q.sc	R r.sc	Ŕ racute.sc	Ř rcaron.sc	Ŗ rcommaaccent.sc

## Unencoded Glyphs

Œ	Ś	Š	Ş	Ŝ	Ș	ß	Ƨ	Ƒ	Ť	Ț	Ț	U	Ú
s.sc	sacute.sc	scaron.sc	scedilla.sc	scircumflex.sc	scommaaccent.sc	germandbls.sc	t.sc	tbar.sc	tcaron.sc	tcedilla.sc	tcommaaccent.sc	u.sc	uacute.sc
Ů	Û	Ü	Ù	Ű	Ū	Ɔ	Ǿ	Û	V	W	Ŵ	Ŷ	Ẁ
ubreve.sc	ucircumflex.sc	udieresis.sc	ugrave.sc	uhungarumlaut.sc	umacron.sc	uogonek.sc	uring.sc	utilde.sc	v.sc	w.sc	wacute.sc	wcircumflex.sc	wdieresis.sc
Ẃ	X	Y	Ý	ÿ	ÿ	ẏ	Z	Ź	Ž	Ż	Ŕ	Ŗ	Ř
wgrave.sc	x.sc	y.sc	yacute.sc	ycircumflex.sc	ydieresis.sc	ygrave.sc	z.sc	zacute.sc	zcaron.sc	zdotaccent.sc	r.sc.ss01	racute.sc.ss01	rcaron.sc.ss01
Œ	U	Ú	Ů	Û	Ü	Ù	Ű	Ū	Ɔ	Ǿ	Û	Y	Ý
ycircumflex.sc.ss01	u.sc.ss01	uacute.sc.ss01	ubreve.sc.ss01	ucircumflex.sc.ss01	udieresis.sc.ss01	ugrave.sc.ss01	uhungarumlaut.sc.ss01	umacron.sc.ss01	uogonek.sc.ss01	uring.sc.ss01	utilde.sc.ss01	y.sc.ss01	yacute.sc.ss01
ÿ	ÿ	ÿ	А	Б	В	Г	Ґ	Ґ	Д	Е	Ё	Ж	З
ycircumflex.sc.ss01	ydieresis.sc.ss01	ygrave.sc.ss01	a-cy.sc	be-cy.sc	ve-cy.sc	ge-cy.sc	gje-cy.sc	gheupturn-cy.sc	de-cy.sc	ie-cy.sc	io-cy.sc	zhe-cy.sc	ze-cy.sc
И	Й	К	Ѐ	Л	М	Н	О	П	Р	С	Т	У	Ў
ii-cy.sc	iishort-cy.sc	ka-cy.sc	kje-cy.sc	el-cy.sc	em-cy.sc	en-cy.sc	o-cy.sc	pe-cy.sc	er-cy.sc	es-cy.sc	te-cy.sc	u-cy.sc	ushort-cy.sc
Φ	Χ	Ч	Ц	Ш	Щ	Ѹ	Ь	Ѹ	Ы	Ль	Нь	С	Є
ef-cy.sc	ha-cy.sc	che-cy.sc	tse-cy.sc	sha-cy.sc	shcha-cy.sc	dzhe-cy.sc	softsign-cy.sc	hardsign-cy.sc	yeru-cy.sc	lje-cy.sc	nje-cy.sc	dze-cy.sc	e-cy.sc

## Unencoded Glyphs

Э eversed-cy.sc	І i-cy.sc	İ yi-cy.sc	Ј je-cy.sc	Ғ tshe-cy.sc	Ю iu-cy.sc	Я ia-cy.sc	Ң dje-cy.sc	Ѓ yat-cy.sc	Ө fita-cy.sc	Ү izhitsa-cy.sc	Ғ ghestroke-cy.sc	Җ zhedescender-cy.sc	Қ kadescender-cy.sc
Ң endescender-cy.sc	У ustrait-cy.sc	Ү ustraitstroke-cy.sc	Җ hadescender-cy.sc	Ҙ chedescender-cy.sc	Һ shha-cy.sc	І palochka-cy.sc	Ә schwa-cy.sc	Й imacron-cy.sc	Ө obarrred-cy.sc	Ү umacron-cy.sc	Ц tsehelper-cy.sc	Я ia-cy.sc.ss01	А alpha.sc
В beta.sc	Г gamma.sc	Δ delta.sc	Ε epsilon.sc	Ζ zeta.sc	Η eta.sc	Θ theta.sc	Ι iota.sc	Κ kappa.sc	Λ lambda.sc	Μ mu.sc	Ν nu.sc	Ξ xi.sc	Ο omicron.sc
Π pi.sc	Ρ rho.sc	Σ sigmfinal.sc	Σ sigma.sc	Τ tau.sc	Υ upsilon.sc	Φ phi.sc	Χ chi.sc	Ψ psi.sc	Ω omega.sc	ӱ upsilondieresis.sc	Ι iotatonos.sc	İ iotadieresis.sc	І iotadierestonos.sc
Υ upsilontonos.sc	Υ upsilondieresis.sc	Υ upsilondieresisstons.sc	Ο omicrontonos.sc	Ω omegatonos.sc	Α alphatonos.sc	Ε epsilontonos.sc	Η etatonos.sc	Α alphavaria.sc	Α alphaoxia.sc	Α alphaperispomeni.sc	Α alphavrachy.sc	Α alphamacron.sc	Ε epsilonvaria.sc
Ε epsilonoxia.sc	Η etavaria.sc	Η etaoxia.sc	Η etaperispomeni.sc	Ι iotavaria.sc	Ι iotaoxia.sc	Ι iotaperispomeni.sc	Ι iotavrachy.sc	Ι iotamacron.sc	Ι iotadialytikavaria.sc	Ι iotadialytikaoxia.sc	Ι iotadialytikaperispomeni.sc	Ο omicronvaria.sc	Ο omicronoxia.sc
Υ upsilonvaria.sc	Υ upsilonoxia.sc	Υ upsilonperispomeni.sc	Υ upsilonvrachy.sc	Υ upsilonmacron.sc	Υ upsilondialytikavaria.sc	Υ upsilondialytikaoxia.sc	Υ upsilondialytikaperispomeni.sc	Ω omegavaria.sc	Ω omegaoxia.sc	Ω omegaperispomeni.sc	¨ dieresiscomb.sc	· dotaccentcomb.sc	˘ gravecomb.sc

## Unencoded Glyphs



## Localized Forms



## Ligatures



## Denominators





## Unencoded Glyphs

Numerators													
0 <small>zero.numr</small>	1 <small>one.numr</small>	2 <small>two.numr</small>	3 <small>three.numr</small>	4 <small>four.numr</small>	5 <small>five.numr</small>	6 <small>six.numr</small>	7 <small>seven.numr</small>	8 <small>eight.numr</small>	9 <small>nine.numr</small>	1 <small>one.numr.sso1</small>	7 <small>seven.numr.sso1</small>	( <small>parenleft.numr</small>	) <small>parenright.numr</small>
+ <small>plus.numr</small>	- <small>minus.numr</small>	= <small>equal.numr</small>											
Slashed Zero													
0 <small>zero.tf.zero</small>	0 <small>zero.zero</small>												
Tabular Figures													
0 <small>zero.tf</small>	1 <small>one.tf</small>	2 <small>two.tf</small>	3 <small>three.tf</small>	4 <small>four.tf</small>	5 <small>five.tf</small>	6 <small>six.tf</small>	7 <small>seven.tf</small>	8 <small>eight.tf</small>	9 <small>nine.tf</small>	1 <small>one.tf.sso1</small>	7 <small>seven.tf.sso1</small>	½ <small>onehalf.tf</small>	⅓ <small>onethird.tf</small>
⅔ <small>twothirds.tf</small>	¼ <small>onequarter.tf</small>	¾ <small>threequarters.tf</small>	⅛ <small>oneeighth.tf</small>	⅝ <small>fiveeighths.tf</small>	⅞ <small>seveneighths.tf</small>	½ <small>onehalf.tf.sso1</small>	⅓ <small>onethird.tf.sso1</small>	¼ <small>onequarter.tf.sso1</small>	⅛ <small>oneeighth.tf.sso1</small>	⅞ <small>seveneighths.tf.sso1</small>	# <small>numbersign.tf</small>	¢ <small>cent.tf</small>	¤ <small>currency.tf</small>
\$ <small>dollar.tf</small>	€ <small>euro.tf</small>	f <small>florin.tf</small>	£ <small>sterling.tf</small>	¥ <small>yen.tf</small>	+ <small>plus.tf</small>	- <small>minus.tf</small>	× <small>multiply.tf</small>	÷ <small>divide.tf</small>	= <small>equal.tf</small>	≠ <small>notequal.tf</small>	> <small>greater.tf</small>	< <small>less.tf</small>	≥ <small>greaterequal.tf</small>
≤ <small>lessequal.tf</small>	± <small>plusminus.tf</small>	≈ <small>approxequal.tf</small>	~ <small>asciitilde.tf</small>	¬ <small>logicalnot.tf</small>	∞ <small>infinity.tf</small>	∏ <small>product.tf</small>	∑ <small>summation.tf</small>	∂ <small>partialdiff.tf</small>	% <small>percent.tf</small>	‰ <small>perthousand.tf</small>	◊ <small>lozenge.tf</small>	§ <small>section.tf</small>	° <small>degree.tf</small>

## Unencoded Glyphs

Nº

numero.tf

### Stylistic Set 1

R

R.ss01

Ř

Racute.ss01

Ṛ̌

Rcaron.ss01

Ŕ

Rcommaaccent.ss01

U

U.ss01

Ú

Uacute.ss01

Û

Ubreve.ss01

Û̂

Ucircumflex.ss01

Ü

Udieresis.ss01

Ù

Ugrave.ss01

Ű

Uhungarumlaut.ss01

Ū

Umacron.ss01

Ȳ

Uogonek.ss01

Ů

Uring.ss01

Û̃

Utilde.ss01

Ÿ

Y.ss01

Ÿ́

Yacute.ss01

ÿ̂

Ycircumflex.ss01

ÿ̈

Ydieresis.ss01

ÿ̀

Ygrave.ss01

β

germandbls.ss01

Ʒ

y.ss01

Ʒ́

yacute.ss01

Ʒ̂

ycircumflex.ss01

Ʒ̈

ydieresis.ss01

Ʒ̀

ygrave.ss01

Я

Ia-cy.ss01

Д

de-cy.ss01

Я

Ia-cy.ss01

θ

theta.ss01

1

one.ss01

7

seven.ss01

1

oneinferior.ss01

7

seveninferior.ss01

1

onesuperior.ss01

7

sevensuperior.ss01

1/2

onehalf.ss01

1/3

onethird.ss01

1/4

onequarter.ss01

1/8

oneeighth.ss01

7/8

seveneighths.ss01

&

ampersand.ss01

### Other

U

TseHelper-cy

u

tsehelper-cy

?

.notdef

˘

caron.alt

˘

brevecomb-cy

˘

descRound-cy

˘

descStraight-cy

˘

descStraight2-cy

o

FaceHelper

f

LIGA\_f\_first

f

LIGA\_f\_high

f

LIGA\_f\_high\_2

f

LIGA\_f\_long

h

LIGA\_h

l

LIGA\_i

j

LIGA\_j

l

LIGA\_l

˘

cedillaTcedilla

f

LIGA\_f\_second

f

LIGA\_f\_high\_second

f

LIGA\_f\_high\_2\_second

f

LIGA\_f\_long\_second