

Technical Report [1118 Glyphs]

# ABeZeh Konfetti

ABeZeh Konfetti Thin

ABeZeh Konfetti ExtraLight

ABeZeh Konfetti Light

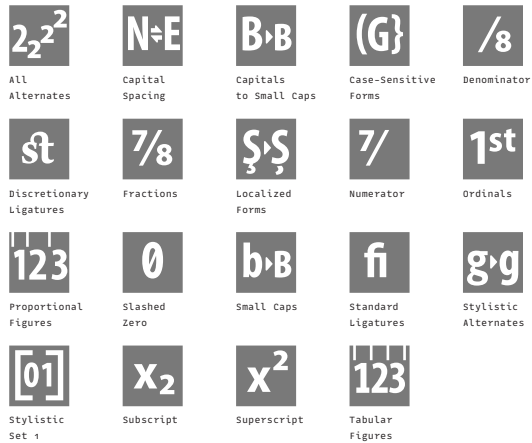
ABeZeh Konfetti Regular

ABeZeh Konfetti Medium

ABeZeh Konfetti Bold

ABeZeh Konfetti ExtraBold

## OT-Features, Scripts & Languages



### Supported Script(s):

Latin  
Cyrillic  
Greek

### 57 languages and many more:

Afrikaans, Albanian, Basque, Bosnian, Breton, Bulgarian, Corsican, Croatian, Czech, Danish, Dutch, English, Esperanto, Estonian, Faroese, Finnish, French, Galician, German, Greenlandic, Hungarian, Icelandic, Indonesian, Irish, Italian, Kurdish, Latvian, Leonese, Lithuanian, Luxembourgish, Malay, Malaysian, Malti, Manx, Norwegian, Occitan, Polish, Portuguese, Rhaeto-Romanic, Romanian, Russian, Sami, Scottish Gaelic, Serbian Latin, Slovak, Slovakian, Slovene, Slovenian, Sorbian (Lower), Sorbian (Upper), Spanish, Swahili, Swedish, Turkish, Turkmen, Ukrainian, Walloon

Code Pages (this overview can happen to be incomplete)

## Mac OS ##

Mac OS Central European

Mac OS Cyrillic

Mac OS Iceland

Mac OS Romanian

Mac OS Ukrainian

## MS Windows ##

MS Windows 1250 Central European

MS Windows 1251 Cyrillic

MS Windows 1252 Western (ANSI)

MS Windows 1254 Turkish

MS Windows 1257 Baltic

## ISO 8859 ##

ISO 8859-1 Latin 1 (Western)

ISO 8859-2 Latin 2 (Central Europe)

ISO 8859-3 Latin 3 (Tu, Malt, Gal, Esp)

ISO 8859-4 Latin 4 (Baltic)

ISO 8859-5 Cyrillic

ISO 8859-9 Latin 5 (Turkish)

ISO 8859-15 Latin 9

## Encoded Glyphs

Basic Latin (0000–007F)													
	!	"	#	\$	%	&	'	(	)	*	+	,	-
0020	0021	0022	0023	0024	0025	0026	0027	0028	0029	002A	002B	002C	002D
.	/	0	1	2	3	4	5	6	7	8	9	:	;
002E	002F	0030	0031	0032	0033	0034	0035	0036	0037	0038	0039	003A	003B
<	=	>	?	@	A	B	C	D	E	F	G	H	I
003C	003D	003E	003F	0040	0041	0042	0043	0044	0045	0046	0047	0048	0049
J	K	L	M	N	●	P	◐	R	S	T	U	V	W
004A	004B	004C	004D	004E	004F	0050	0051	0052	0053	0054	0055	0056	0057
X	Y	Z	[	\	]	^	_	`	a	b	c	d	e
0058	0059	005A	005B	005C	005D	005E	005F	0060	0061	0062	0063	0064	0065
f	g	h	i	j	k	l	m	n	●	p	◑	r	s
0066	0067	0068	0069	006A	006B	006C	006D	006E	006F	0070	0071	0072	0073
t	u	v	w	x	y	z	{		}	~			
0074	0075	0076	0077	0078	0079	007A	007B	007C	007D	007E			

## Encoded Glyphs

Latin-1 Supplement (0080-00FF)													
ı	ç	£	☒	¥	¦	§	¨	©	ª	«	¬	–	®
00A1	00A2	00A3	00A4	00A5	00A6	00A7	00A8	00A9	00AA	00AB	00AC	00AD	00AE
–	•	±	²	³	´	µ	¶	·	¸	¹	º	»	¼
00AF	00B0	00B1	00B2	00B3	00B4	00B5	00B6	00B7	00B8	00B9	00BA	00BB	00BC
½	¾	¿	À	Á	Â	Ã	Ä	Å	Æ	Ç	È	É	Ê
00BD	00BE	00BF	00C0	00C1	00C2	00C3	00C4	00C5	00C6	00C7	00C8	00C9	00CA
Ë	Ì	Í	Î	Ï	Ð	Ñ	Ò	Ó	Ô	Õ	Ö	×	Ø
00CB	00CC	00CD	00CE	00CF	00D0	00D1	00D2	00D3	00D4	00D5	00D6	00D7	00D8
Ù	Ú	Û	Ü	Ý	Þ	ß	à	á	â	ã	ä	å	æ
00D9	00DA	00DB	00DC	00DD	00DE	00DF	00E0	00E1	00E2	00E3	00E4	00E5	00E6
ç	è	é	ê	ë	ì	í	î	ï	ð	ñ	ò	ó	ô
00E7	00E8	00E9	00EA	00EB	00EC	00ED	00EE	00EF	00F0	00F1	00F2	00F3	00F4
õ	ö	÷	ø	ù	ú	û	ü	ý	þ	ÿ			
00F5	00F6	00F7	00F8	00F9	00FA	00FB	00FC	00FD	00FE	00FF			

Encoded Glyphs

Latin Extended-A (0100–017F)																																										
Ā	ā	Ă	ă	Ą	ą	Ć	ć	Ĉ	ĉ	Č	č	Č	č	0100	0101	0102	0103	0104	0105	0106	0107	0108	0109	010A	010B	010C	010D															
Ď	ď	Đ	đ	Ē	ē	Ě	ě	Ĕ	ĕ	Ę	ę	Ě	ě	010E	010F	0110	0111	0112	0113	0114	0115	0116	0117	0118	0119	011A	011B															
Ĝ	ĝ	Ğ	ğ	Ġ	ġ	Ģ	ģ	Ĥ	ĥ	Ħ	ħ	Ĩ	ĩ	011C	011D	011E	011F	0120	0121	0122	0123	0124	0125	0126	0127	0128	0129															
Ī	ī	Ĳ	ĳ	Ĵ	ĵ	İ	ı	Ĳ	ĳ	Ĵ	ĵ	Ķ	ķ	012A	012B	012C	012D	012E	012F	0130	0131	0132	0133	0134	0135	0136	0137															
Ķ	Ļ	ļ	Ł	ł	Ł	ł	Ł	ł	Ł	ł	Ł	ł	Ń	ń	Ņ	0138	0139	013A	013B	013C	013D	013E	013F	0140	0141	0142	0143	0144	0145													
Ņ	Ň	ň	Ŋ	ŋ	Ō	ō	Ŏ	ö	Ŏ	ö	Ŏ	ö	Ŏ	ö	Ŏ	ö	Ŏ	ö	Ŏ	ö	Ŏ	ö	Ŏ	ö	Ŏ	ö	Ŏ	ö	0146	0147	0148	014A	014B	014C	014D	014E	014F	0150	0151	0152	0153	0154
Ŕ	Ŗ	ŗ	Ř	ř	Ś	ś	Ŝ	ŝ	Ş	ş	Ş	ş	Ş	ş	Ş	ş	Ş	ş	Ş	ş	Ş	ş	Ş	ş	Ş	ş	Ş	ş	0155	0156	0157	0158	0159	015A	015B	015C	015D	015E	015F	0160	0161	0162

## Encoded Glyphs

ƚ	Ŧ	ƚ	ƚ	ƚ	Ū	ū	Ū	ū	Ū	ū	Ū	ū	Ū
0163	0164	0165	0166	0167	0168	0169	016A	016B	016C	016D	016E	016F	0170
Ū	Ū	Ū	Ū	Ū	Ū	Ū	Ū	Ū	Ū	Ū	Ū	Ū	Ū
0171	0172	0173	0174	0175	0176	0177	0178	0179	017A	017B	017C	017D	017E
Latin Extended-B (0180–024F)													
f	Ɔ	Ɔ	Ɔ	Ɔ	Ɔ	Ɔ	Ɔ	Ɔ	Ɔ	Ɔ	Ɔ	Ɔ	Ɔ
0192	01FC	01FD	01FE	01FF	0218	0219	021A	021B	0237				
Spacing Modifier Letters (02B0–02FF)													
ˆ	ˆ	ˆ	ˆ	ˆ	ˆ	ˆ	ˆ	ˆ	ˆ	ˆ	ˆ	ˆ	ˆ
02C6	02C7	02D8	02D9	02DA	02DB	02DC	02DD						
Combining Diacritical Marks (0300–036F)													
ˆ	ˆ	ˆ	ˆ	ˆ	ˆ	ˆ	ˆ	ˆ	ˆ	ˆ	ˆ	ˆ	ˆ
0300	0301	0302	0303	0304	0306	0307	0308	030A	030B	030C	0312	0326	0327
ˆ													
0328													
Greek and Coptic (0370–03FF)													
ˆ	ˆ	ˆ	ˆ	ˆ	ˆ	ˆ	ˆ	ˆ	ˆ	ˆ	ˆ	ˆ	ˆ
0384	0385	0386	0388	0389	038A	038C	038E	038F	0390	0391	0392	0393	0394

Encoded Glyphs

Ε	Z	H	●	I	K	Λ	M	N	Ξ	●	Π	Ρ	Σ
0395	0396	0397	0398	0399	039A	039B	039C	039D	039E	039F	03A0	03A1	03A3
T	Υ	●	X	Ψ	Ω	ï	ÿ	ά	έ	ή	ί	ü	α
03A4	03A5	03A6	03A7	03A8	03A9	03AA	03AB	03AC	03AD	03AE	03AF	03B0	03B1
β	γ	δ	ε	ζ	η	θ	ι	κ	λ	μ	ν	ξ	●
03B2	03B3	03B4	03B5	03B6	03B7	03B8	03B9	03BA	03BB	03BC	03BD	03BE	03BF
π	ρ	ς	●	τ	υ	φ	χ	ψ	ω	ï	ü	ó	ú
03C0	03C1	03C2	03C3	03C4	03C5	03C6	03C7	03C8	03C9	03CA	03CB	03CC	03CD
ώ													
03CE													

Cyrillic (0400-04FF)													
Ё	Ђ	Ѓ	Є	Ѕ	І	Ї	Ј	Љ	Њ	Ћ	Ќ	Ў	Џ
0401	0402	0403	0404	0405	0406	0407	0408	0409	040A	040B	040C	040E	040F
А	Б	В	Г	Д	Е	Ж	З	И	Й	К	Л	М	Н
0410	0411	0412	0413	0414	0415	0416	0417	0418	0419	041A	041B	041C	041D



Encoded Glyphs

● 041E	П 041F	Р 0420	С 0421	Т 0422	У 0423	● 0424	Х 0425	Ц 0426	Ч 0427	Ш 0428	Щ 0429	Ъ 042A	Ы 042B
Ь 042C	Э 042D	Ю 042E	Я 042F	а 0430	б 0431	в 0432	г 0433	д 0434	е 0435	ж 0436	з 0437	и 0438	й 0439
К 043A	Л 043B	М 043C	Н 043D	● 043E	П 043F	Р 0440	С 0441	Т 0442	У 0443	● 0444	Х 0445	Ц 0446	Ч 0447
Ш 0448	Щ 0449	Ъ 044A	Ы 044B	Ь 044C	Э 044D	Ю 044E	Я 044F	ë 0451	ђ 0452	ѓ 0453	€ 0454	Ѕ 0455	і 0456
ï 0457	ј 0458	љ 0459	њ 045A	ћ 045B	ќ 045C	ў 045E	џ 045F	џ 0462	џ 0463	● 0472	● 0473	V 0474	v 0475
Г 0490	Г 0491	ƒ 0492	ƒ 0493	Ж 0496	Ж 0497	Қ 049A	Қ 049B	Ң 04A2	Ң 04A3	У 04AE	У 04AF	Ү 04B0	Ү 04B1
Х 04B2	х 04B3	Ц 04B6	ц 04B7	h 04BA	h 04BB	l 04C0	l 04CF	ə 04D8	ə 04D9	Й 04E2	й 04E3	● 04E8	● 04E9

## Encoded Glyphs

ÿ	ÿ
04EE	04EF

Latin Extended Additional (1E00-1EFF)								
Ŵ	ŵ	Ŷ	ŷ	Ÿ	Ź	ẞ	Ỳ	ỳ
1E80	1E81	1E82	1E83	1E84	1E85	1E9E	1EF2	1EF3

Greek Extended (1F00-1FFF)													
Ά	ά	Έ	έ	ή	ή	ì	í	ò	ó	ù	ú	ώ	ώ
1F70	1F71	1F72	1F73	1F74	1F75	1F76	1F77	1F78	1F79	1F7A	1F7B	1F7C	1F7D

Ǻ	ǻ	Ǽ	Ǽ	Ǽ	Ǽ	Á	˜	˝	ñ	È	É	È	É
1FB0	1FB1	1FB6	1FB8	1FB9	1FBA	1FBB	1FC0	1FC1	1FC6	1FC8	1FC9	1FCA	1FCB

İ	ı	İ	ı	İ	ı	İ	ı	İ	ı	Û	ü	Û	ü
1FD0	1FD1	1FD2	1FD3	1FD6	1FD7	1FD8	1FD9	1FDA	1FDB	1FE0	1FE1	1FE2	1FE3

Û	ü	ÿ	ÿ	Ỳ	Ỳ	˚	˚	˘	ẚ	ò	ó	Ò	Ó
1FE6	1FE7	1FE8	1FE9	1FEA	1FEB	1FED	1FEE	1FEF	1FF6	1FF8	1FF9	1FFA	1FFB

˙
1FFD

## Encoded Glyphs

General Punctuation (2000–206F)													
—	—	—	‘	’	,	“	”	”	†	‡	•	…	‰
2012	2013	2014	2018	2019	201A	201C	201D	201E	2020	2021	2022	2026	2030
<	>	/											
2039	203A	2044											
Superscripts and Subscripts (2070–209F)													
●	i	4	5	6	7	8	9	+	-	=	(	)	n
2070	2071	2074	2075	2076	2077	2078	2079	207A	207B	207C	207D	207E	207F
●	1	2	3	4	5	6	7	8	9	+	-	=	(
2080	2081	2082	2083	2084	2085	2086	2087	2088	2089	208A	208B	208C	208D
)													
208E													
Currency Symbols (20A0–20CF)													
€													
20AC													
Letterlike Symbols (2100–214F)													
N <sup>●</sup>	™	Ω	e										
2116	2122	2126	212E										

## Encoded Glyphs

### Number Forms (2150–218F)

1/3

2153

2/3

2154

1/8

215B

3/8

215C

5/8

215D

7/8

215E

### Arrows (2190–21FF)



2190



2191



2192



2193



2194



2195



2196



2197



2198



2199

### Mathematical Operators (2200–22FF)



2202



2205



2206



220F



2211



2212



221A



221E



222B



2248



2260



2264



2265



22C6

### Geometric Shapes (25A0–25FF)



25CA

### Alphabetic Presentation Forms (FB00–FB4F)

ff

FB00

fi

FB01

fl

FB02

ffi

FB03

ffl

FB04

### Emoticons (1F600–1F64F)



1F600



1F609



1F610



1F612



1F61B

## Unencoded Glyphs

### Small Capitals

À	Á	Ă	Â	Ä	À	Ā	Ą	Å	Ã	Æ	É	Б	С
a.sc	aacute.sc	abreve.sc	acircumflex.sc	adieresis.sc	agrave.sc	amacron.sc	aogonek.sc	aring.sc	atilde.sc	ae.sc	eaacute.sc	b.sc	c.sc
Ć	Č	Ç	Ĉ	Ċ	Ð	Đ	Ď	Đ	Е	É	Ě	Ě	Ê
ccacute.sc	ccaron.sc	ccedilla.sc	ccircumflex.sc	cdotaccent.sc	d.sc	eth.sc	dcaron.sc	dcroat.sc	e.sc	eaacute.sc	ebreve.sc	ecaron.sc	ecircumflex.sc
Ë	È	È	Ē	Ę	F	FF	FFH	FFI	FFJ	FFL	FH	FJ	FI
edieresis.sc	edotaccent.sc	egrave.sc	emacron.sc	eogonek.sc	f.sc	f_f.sc	f_f_h.sc	f_f_i.sc	f_f_j.sc	f_f_l.sc	f_h.sc	f_j.sc	f_i.sc
FL	G	Ğ	Ĝ	Ġ	Ġ	H	Ĥ	Ĥ	I	Í	Ĭ	Î	Ï
fl.sc	g.sc	gbreve.sc	gcircumflex.sc	gcommaaccent.sc	gdotaccent.sc	h.sc	hbar.sc	hcircumflex.sc	i.sc	iacute.sc	ibreve.sc	icircumflex.sc	idieresis.sc
Ì	IJ	Ī	Ĳ	Ĩ	J	Ĵ	K	Ķ	K	L	Ł	Ł	Ł
igrave.sc	ij.sc	imacron.sc	iogonek.sc	itilde.sc	j.sc	jcircumflex.sc	k.sc	kcommaaccent.sc	kgreenlandic.sc	l.sc	lacute.sc	lcaron.sc	lcommaaccent.sc
Ł	Ł	M	N	Ń	Ñ	Ń	Ń	Ñ	●	Ó	Ö	Ô	Ö
ldot.sc	lslash.sc	m.sc	n.sc	nacute.sc	ncaron.sc	ncommaaccent.sc	eng.sc	ntilde.sc	o.sc	oacute.sc	obreve.sc	ocircumflex.sc	odieresis.sc
Ò	Ő	Ö	Ø	Ø	Õ	Œ	Þ	þ	Œ	Ŕ	Ŕ	Ř	Ŕ
ograve.sc	ohungarumlaut.sc	omacron.sc	oslash.sc	oslashacute.sc	otilde.sc	oe.sc	p.sc	thorn.sc	q.sc	r.sc	racute.sc	rcaron.sc	rcommaaccent.sc

## Unencoded Glyphs

S s.sc	Ś sacute.sc	Š scaron.sc	Ş scedilla.sc	Ŝ scircumflex.sc	Ș scommaaccent.sc	ß germandbls.sc	Ƨ t.sc	Ƨ̄ tbar.sc	Ť tcaron.sc	Ț tcedilla.sc	Ț̄ tcommaaccent.sc	U u.sc	Ú uacute.sc
Ů ubreve.sc	Û ucircumflex.sc	Ü udieresis.sc	Ù ugrave.sc	Û uhungarumlaut.sc	Ū umacron.sc	Ʈ uogonek.sc	Û uring.sc	Û utilde.sc	V v.sc	W w.sc	Ŵ wacute.sc	Ŷ wcircumflex.sc	Ẁ wdieresis.sc
Ẁ wgrave.sc	X x.sc	Y y.sc	Ý yacute.sc	ÿ ycircumflex.sc	ÿ̈ ydieresis.sc	ÿ̇ ygrave.sc	Z z.sc	Ž zacute.sc	Ẓ̌ zcaron.sc	Ž̇ zdotaccent.sc	А a-cy.sc	Б be-cy.sc	В ve-cy.sc
Г ge-cy.sc	Ґ gje-cy.sc	Ґ̣ gheupturn-cy.sc	Д de-cy.sc	Е ie-cy.sc	Ё io-cy.sc	Ж zhe-cy.sc	З ze-cy.sc	И ii-cy.sc	Й iishort-cy.sc	К ka-cy.sc	Ѐ kje-cy.sc	Л el-cy.sc	М em-cy.sc
Н en-cy.sc	О o-cy.sc	П pe-cy.sc	Р er-cy.sc	С es-cy.sc	Т te-cy.sc	У u-cy.sc	Ў ushort-cy.sc	Ф ef-cy.sc	Х ha-cy.sc	Ч che-cy.sc	Ц tse-cy.sc	Ш sha-cy.sc	Щ shcha-cy.sc
Ц̣ dze-cy.sc	Ь softsign-cy.sc	Ь̣ hardsign-cy.sc	Ы yeru-cy.sc	Љ lje-cy.sc	Њ nje-cy.sc	Ѕ dze-cy.sc	Є e-cy.sc	Э̄ ereversed-cy.sc	І i-cy.sc	İ yi-cy.sc	Ј je-cy.sc	Ћ tshe-cy.sc	Ю iu-cy.sc
Я ia-cy.sc	Ђ dje-cy.sc	Ђ̣ yat-cy.sc	Ф̣ fita-cy.sc	Ѡ izhitsa-cy.sc	Ѳ ghestroke-cy.sc	Ѣ̣ zhedescender-cy.sc	Ѥ̣ kadescender-cy.sc	Ѧ̣ endescender-cy.sc	Ү ustrait-cy.sc	Ү̣ ustraitstroke-cy.sc	Ҝ̣ hadescender-cy.sc	Ҟ̣ chedescender-cy.sc	Һ shha-cy.sc

## Unencoded Glyphs

ǀ palockha-cy.sc	ǂ schwa-cy.sc	ǃ imacron-cy.sc	Ǆ obarred-cy.sc	ǅ umacron-cy.sc	ǆ alpha.sc	Ǉ beta.sc	ǈ gamma.sc	ǉ delta.sc	Ǌ epsilon.sc	ǋ zeta.sc	ǌ eta.sc	Ǎ theta.sc	ǎ iota.sc
Ǐ kappa.sc	ǐ lambda.sc	Ǒ mu.sc	ǒ nu.sc	Ǔ xi.sc	ǔ omicron.sc	Ǖ pi.sc	ǖ rho.sc	Ǘ sigmafinal.sc	Ǚ sigma.sc	ǚ tau.sc	Ǜ upsilon.sc	ǜ phi.sc	ǝ chi.sc
Ǟ psi.sc	ǟ omega.sc	Ǡ Upsilondieresis.sc	ǡ iotatonos.sc	Ǣ iotadieresis.sc	ǣ iotadieresisstonos.sc	Ǥ upsilontonos.sc	ǥ upsilondieresis.sc	Ǉ upsilondieresisstonos.sc	ǈ omicrontonos.sc	ǉ omegatonos.sc	Ǌ alphatonos.sc	ǋ epsilontonos.sc	ǌ etatonos.sc
Ǎ alphavaria.sc	ǂ alphaoxia.sc	ǃ alphaperispomeni.sc	Ǆ alphavrachy.sc	ǅ alphamacron.sc	ǆ epsilonvaria.sc	Ǉ epsilonoxia.sc	ǈ etavaria.sc	ǉ etaoxia.sc	Ǌ etaperispomeni.sc	ǋ iotavaria.sc	ǌ iotaoxia.sc	Ǎ iotaperispomeni.sc	ǎ iotavrachy.sc
Ǐ iotamacron.sc	ǐ iotadialytikavaria.sc	Ǒ iotadialytikaoxia.sc	ǒ iotadialytikaperispomeni.sc	Ǔ omicronvaria.sc	ǔ omicronoxia.sc	Ǖ upsilonvaria.sc	ǖ upsilonoxia.sc	Ǘ upsilonperispomeni.sc	Ǚ upsilonvrachy.sc	ǚ upsilonmacron.sc	Ǜ upsilondialytikavaria.sc	ǜ upsilondialytikaoxia.sc	ǝ upsilondialytikaperispomeni.sc
Ǟ omegavaria.sc	ǟ omegaoxia.sc	Ǡ omegaperispomeni.sc	ǡ dieresiscomb.sc	Ǣ dotaccentcomb.sc	ǣ gravecomb.sc	Ǥ acutecomb.sc	ǥ hungarumlautcomb.sc	Ǉ circumflexcomb.sc	ǈ caroncomb.sc	ǉ brevecomb.sc	Ǌ ringcomb.sc	ǋ tildecomb.sc	ǌ macroncomb.sc
Ꞁ commaaccentcomb.sc	ꞁ cedillacomb.sc	Ꞃ ogonekcomb.sc											

## Unencoded Glyphs

Case Sensitive Forms													
••	•	˘	ˆ	˝	ˆ	˘	˘	•	˜	—	,	¸	ć
dieresiscomb.case	dotaccentcomb.case	gravecomb.case	acutecomb.case	hungarumlautcomb.case	circumflexcomb.case	caroncomb.case	brevecomb.case	ringcomb.case	tildecomb.case	macroncomb.case	commaaccentcomb.case	cedillacomb.case	ogonekcomb.case

˙	˘
tonos.case	brevecomb-cy.case

### Localized Forms

ı
idotaccent

### Ligatures

ffh	ffj	fh	fj
f_f_h	f_f_j	f_h	f_j

### Denominators

0	1	2	3	4	5	6	7	8	9	1	7	(	)
zero.dnom	one.dnom	two.dnom	three.dnom	four.dnom	five.dnom	six.dnom	seven.dnom	eight.dnom	nine.dnom	one.dnom.sso1	seven.dnom.sso1	parenleft.dnom	parenright.dnom

+	-	=
plus.dnom	minus.dnom	equal.dnom

### Numerators

0	1	2	3	4	5	6	7	8	9	1	7	(	)
zero.numr	one.numr	two.numr	three.numr	four.numr	five.numr	six.numr	seven.numr	eight.numr	nine.numr	one.numr.sso1	seven.numr.sso1	parenleft.numr	parenright.numr





## Unencoded Glyphs

Stylistic Set 1											
ß	1	7	1	7	1	7	1/2	1/3	1/4	1/8	7/8
germandbls.ss01	one.ss01	seven.ss01	oneinferior.ss01	seveninferior.ss01	onesuperior.ss01	sevensuperior.ss01	onehalf.ss01	onethird.ss01	onequarter.ss01	oneeighth.ss01	seveeneighths.ss01
Other											
?	'	˘									
.notdef	caron.alt	brevecomb-cy									