

Technical Report [1127 Glyphs]

ABeZeh Slab

ABeZeh Slab Thin

ABeZeh Slab ExtraLight

ABeZeh Slab Light

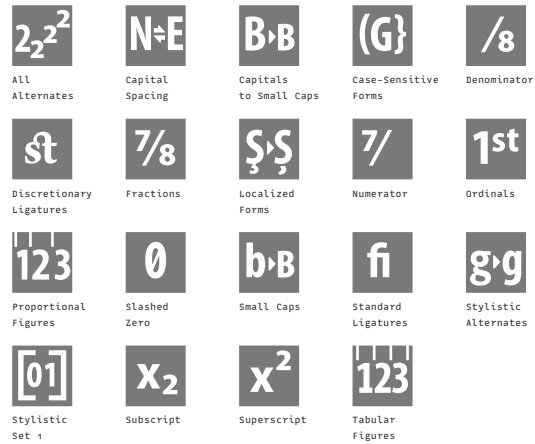
ABeZeh Slab Regular

ABeZeh Slab Medium

ABeZeh Slab Bold

ABeZeh Slab ExtraBold

OT-Features, Scripts & Languages



Supported Script(s):

Latin
Cyrillic
Greek

57 languages and many more:

Afrikaans, Albanian, Basque, Bosnian, Breton, Bulgarian, Corsican, Croatian, Czech, Danish, Dutch, English, Esperanto, Estonian, Faroese, Finnish, French, Galician, German, Greenlandic, Hungarian, Icelandic, Indonesian, Irish, Italian, Kurdish, Latvian, Leonese, Lithuanian, Luxembourgish, Malay, Malaysian, Malti, Manx, Norwegian, Occitan, Polish, Portuguese, Rhaeto-Romanic, Romanian, Russian, Sami, Scottish Gaelic, Serbian Latin, Slovak, Slovakian, Slovene, Slovenian, Sorbian (Lower), Sorbian (Upper), Spanish, Swahili, Swedish, Turkish, Turkmen, Ukrainian, Walloon

Code Pages (this overview can happen to be incomplete)

Mac OS

Mac OS Central European

Mac OS Cyrillic

Mac OS Iceland

Mac OS Romanian

Mac OS Ukrainian

MS Windows

MS Windows 1250 Central European

MS Windows 1251 Cyrillic

MS Windows 1252 Western (ANSI)

MS Windows 1254 Turkish

MS Windows 1257 Baltic

ISO 8859

ISO 8859-1 Latin 1 (Western)

ISO 8859-2 Latin 2 (Central Europe)

ISO 8859-3 Latin 3 (Tu, Malt, Gal, Esp)

ISO 8859-4 Latin 4 (Baltic)

ISO 8859-5 Cyrillic

ISO 8859-9 Latin 5 (Turkish)

ISO 8859-15 Latin 9

Encoded Glyphs

Basic Latin (0000-007F)													
	!	"	#	\$	%	&	'	()	*	+	,	-
0020	0021	0022	0023	0024	0025	0026	0027	0028	0029	002A	002B	002C	002D
.	/	0	1	2	3	4	5	6	7	8	9	:	;
002E	002F	0030	0031	0032	0033	0034	0035	0036	0037	0038	0039	003A	003B
<	=	>	?	@	A	B	C	D	E	F	G	H	I
003C	003D	003E	003F	0040	0041	0042	0043	0044	0045	0046	0047	0048	0049
J	K	L	M	N	O	P	Q	R	S	T	U	V	W
004A	004B	004C	004D	004E	004F	0050	0051	0052	0053	0054	0055	0056	0057
X	Y	Z	[\]	^	_	`	a	b	c	d	e
0058	0059	005A	005B	005C	005D	005E	005F	0060	0061	0062	0063	0064	0065
f	g	h	i	j	k	l	m	n	o	p	q	r	s
0066	0067	0068	0069	006A	006B	006C	006D	006E	006F	0070	0071	0072	0073
t	u	v	w	x	y	z	{		}	~			
0074	0075	0076	0077	0078	0079	007A	007B	007C	007D	007E			

Encoded Glyphs

Latin-1 Supplement (0080-00FF)													
ı	ç	£	¤	¥		§	¨	©	à	«	¬	-	®
00A1	00A2	00A3	00A4	00A5	00A6	00A7	00A8	00A9	00AA	00AB	00AC	00AD	00AE
-	°	±	²	³	´	µ	¶	·	¸	¹	º	»	¼
00AF	00B0	00B1	00B2	00B3	00B4	00B5	00B6	00B7	00B8	00B9	00BA	00BB	00BC
½	¾	¿	À	Á	Â	Ã	Ä	Å	Æ	Ç	È	É	Ê
00BD	00BE	00BF	00C0	00C1	00C2	00C3	00C4	00C5	00C6	00C7	00C8	00C9	00CA
Ë	Ì	Í	Î	Ï	Ð	Ñ	Ò	Ó	Ô	Õ	Ö	×	Ø
00CB	00CC	00CD	00CE	00CF	00D0	00D1	00D2	00D3	00D4	00D5	00D6	00D7	00D8
Ù	Ú	Û	Ü	Ý	Þ	ß	à	á	â	ã	ä	å	æ
00D9	00DA	00DB	00DC	00DD	00DE	00DF	00E0	00E1	00E2	00E3	00E4	00E5	00E6
ç	è	é	ê	ë	ì	í	î	ï	ð	ñ	ò	ó	ô
00E7	00E8	00E9	00EA	00EB	00EC	00ED	00EE	00EF	00F0	00F1	00F2	00F3	00F4
õ	ö	÷	ø	ù	ú	û	ü	ý	þ	ÿ			
00F5	00F6	00F7	00F8	00F9	00FA	00FB	00FC	00FD	00FE	00FF			

Encoded Glyphs

Latin Extended-A (0100–017F)																											
Ā	ā	Ă	ă	Ą	ą	Ć	ć	Ĉ	ĉ	Ċ	ċ	Č	č	0100	0101	0102	0103	0104	0105	0106	0107	0108	0109	010A	010B	010C	010D
Ď	ď	Đ	đ	Ē	ē	Ě	ě	È	è	Ę	ę	Ě	ě	010E	010F	0110	0111	0112	0113	0114	0115	0116	0117	0118	0119	011A	011B
Ĝ	ĝ	Ğ	ğ	Ġ	ġ	Ģ	ģ	Ĥ	ĥ	Ħ	ħ	Ĩ	ĩ	011C	011D	011E	011F	0120	0121	0122	0123	0124	0125	0126	0127	0128	0129
Ī	ī	Ĭ	ĭ	Į	į	İ	ı	IJ	ij	Ĵ	ĵ	Ɔ	Ɔ	012A	012B	012C	012D	012E	012F	0130	0131	0132	0133	0134	0135	0136	0137
Ɔ	Ł	ł	Ł	ł	Ł	ł	Ł	ł	Ł	ł	Ń	ń	Ń	0138	0139	013A	013B	013C	013D	013E	013F	0140	0141	0142	0143	0144	0145
Ń	Ń	ń	Ń	Ń	Ō	ō	Ŏ	ö	Ŏ	ö	Œ	œ	Ŕ	0146	0147	0148	014A	014B	014C	014D	014E	014F	0150	0151	0152	0153	0154
ŕ	Ŕ	ŕ	Ř	ř	Ś	ś	Ŝ	ș	Ș	ș	Š	š	Ţ	0155	0156	0157	0158	0159	015A	015B	015C	015D	015E	015F	0160	0161	0162

Encoded Glyphs

ƚ	Ť	ƚ	Ʀ	ƚ	Ū	ū	Ū	ū	Ū	ū	Ū	ū	Ū
0163	0164	0165	0166	0167	0168	0169	016A	016B	016C	016D	016E	016F	0170
ŭ	Ů	ů	Ŵ	ŵ	Ŷ	ŷ	ÿ	Ž	ž	Ž	ž	Ž	ž
0171	0172	0173	0174	0175	0176	0177	0178	0179	017A	017B	017C	017D	017E
Latin Extended-B (0180–024F)													
f	Æ	æ	Ø	ø	Ş	ş	Ț	ț	J				
0192	01FC	01FD	01FE	01FF	0218	0219	021A	021B	0237				
Spacing Modifier Letters (02B0–02FF)													
ˆ	˘	˙	˚	◦	◌	˜	”						
02C6	02C7	02D8	02D9	02DA	02DB	02DC	02DD						
Combining Diacritical Marks (0300–036F)													
˘	˙	˚	˛	˜	◌	◌	◌	◌	◌	◌	◌	◌	◌
0300	0301	0302	0303	0304	0306	0307	0308	030A	030B	030C	0326	0327	0328
Greek and Coptic (0370–03FF)													
´	ˆ	À	É	Η	Ι	Ο	Υ	Ω	ΐ	Α	Β	Γ	Δ
0384	0385	0386	0388	0389	038A	038C	038E	038F	0390	0391	0392	0393	0394
Ε	Ζ	Η	Θ	Ι	Κ	Λ	Μ	Ν	Ξ	Ο	Π	Ρ	Σ
0395	0396	0397	0398	0399	039A	039B	039C	039D	039E	039F	03A0	03A1	03A3

Encoded Glyphs

Τ	Υ	Φ	Χ	Ψ	Ω	Ï	ÿ	ά	έ	ή	ί	Û	α
03A4	03A5	03A6	03A7	03A8	03A9	03AA	03AB	03AC	03AD	03AE	03AF	03B0	03B1
β	γ	δ	ε	ζ	η	θ	ι	κ	λ	μ	ν	ξ	ο
03B2	03B3	03B4	03B5	03B6	03B7	03B8	03B9	03BA	03BB	03BC	03BD	03BE	03BF
π	ρ	ς	σ	τ	υ	φ	χ	ψ	ω	ï	ü	ó	ú
03C0	03C1	03C2	03C3	03C4	03C5	03C6	03C7	03C8	03C9	03CA	03CB	03CC	03CD
ώ													
03CE													
Cyrillic (0400-04FF)													
Ë	Ғ	Ѓ	Є	Ѕ	І	İ	Ј	Љ	Њ	Ң	Ќ	Ў	Џ
0401	0402	0403	0404	0405	0406	0407	0408	0409	040A	040B	040C	040E	040F
А	Б	В	Г	Д	Е	Ж	З	И	Й	К	Л	М	Н
0410	0411	0412	0413	0414	0415	0416	0417	0418	0419	041A	041B	041C	041D
О	П	Р	С	Т	У	Ф	Х	Ц	Ч	Ш	Щ	Ъ	Ы
041E	041F	0420	0421	0422	0423	0424	0425	0426	0427	0428	0429	042A	042B

Encoded Glyphs

Ь	Э	Ю	Я	а	б	в	г	д	е	ж	з	и	й
042C	042D	042E	042F	0430	0431	0432	0433	0434	0435	0436	0437	0438	0439
К	Л	М	Н	О	П	р	с	т	у	ф	х	ц	ч
043A	043B	043C	043D	043E	043F	0440	0441	0442	0443	0444	0445	0446	0447
Ш	Щ	Ъ	Ы	ь	э	ю	я	ё	ђ	ѓ	є	ѕ	і
0448	0449	044A	044B	044C	044D	044E	044F	0451	0452	0453	0454	0455	0456
ї	ј	љ	њ	ћ	ќ	ў	џ	ѡ	ѣ	Ѧ	ѧ	Ѩ	ѩ
0457	0458	0459	045A	045B	045C	045E	045F	0462	0463	0472	0473	0474	0475
Ґ	ґ	Ғ	ғ	Җ	җ	Қ	қ	Ң	ң	Ү	ү	Ұ	ұ
0490	0491	0492	0493	0496	0497	049A	049B	04A2	04A3	04AE	04AF	04B0	04B1
Ҳ	ҳ	Ҷ	ҷ	Һ	һ	І	і	Ә	ә	Й̄	й̄	Ө	ө
04B2	04B3	04B6	04B7	04BA	04BB	04C0	04CF	04D8	04D9	04E2	04E3	04E8	04E9
Ү̄	ү̄												
04EE	04EF												

Encoded Glyphs

Latin Extended Additional (1E00–1EFF)

Ŵ	ŵ	Ŷ	ŷ	Ÿ	Ź	ẞ	Ỳ	ỳ
1E80	1E81	1E82	1E83	1E84	1E85	1E9E	1EF2	1EF3

Greek Extended (1F00–1FFF)

À	Á	È	É	ἥ	ή	Ì	Í	Ò	Ó	Ù	Ú	Ẁ	ẁ
1F70	1F71	1F72	1F73	1F74	1F75	1F76	1F77	1F78	1F79	1F7A	1F7B	1F7C	1F7D

Ǻ	ā	ã	Ä	Ā	À	Á	˜	˜	ñ	È	É	È	Í
1FB0	1FB1	1FB6	1FB8	1FB9	1FBA	1FBB	1FC0	1FC1	1FC6	1FC8	1FC9	1FCA	1FCB

İ	ī	ì	í	ĩ	ĩ	Ĭ	Ī	Ì	Í	Û	Ū	Û	Ū
1FD0	1FD1	1FD2	1FD3	1FD6	1FD7	1FD8	1FD9	1FDA	1FDB	1FE0	1FE1	1FE2	1FE3

Ū	Ū	Ỳ	Ỳ	Ỳ	Ỳ	˙	˙	˙	Ẁ	Ò	Ó	Ò	Ó
1FE6	1FE7	1FE8	1FE9	1FEA	1FEB	1FED	1FEE	1FEF	1FF6	1FF8	1FF9	1FFA	1FFB

˙
1FFD

General Punctuation (2000–206F)

—	—	—	‘	’	,	“	”	„	†	‡	•	…	‰
2012	2013	2014	2018	2019	201A	201C	201D	201E	2020	2021	2022	2026	2030

Encoded Glyphs

<	>	/
2039	203A	2044

Superscripts and Subscripts (2070–209F)													
0	i	4	5	6	7	8	9	+	-	=	()	n
2070	2071	2074	2075	2076	2077	2078	2079	207A	207B	207C	207D	207E	207F

0	1	2	3	4	5	6	7	8	9	+	-	=	(
2080	2081	2082	2083	2084	2085	2086	2087	2088	2089	208A	208B	208C	208D

)
208E

Currency Symbols (20A0–20CF)
€
20AC

Letterlike Symbols (2100–214F)			
N ^o	™	Ω	e
2116	2122	2126	212E

Number Forms (2150–218F)					
1/3	2/3	1/8	3/8	5/8	7/8
2153	2154	215B	215C	215D	215E

Encoded Glyphs

Arrows (2190–21FF)

									
2190	2191	2192	2193	2194	2195	2196	2197	2198	2199

Mathematical Operators (2200–22FF)

													
2202	2205	2206	220F	2211	2212	221A	221E	222B	2248	2260	2264	2265	22C6


Geometric Shapes (25A0–25FF)


25CA

Alphabetic Presentation Forms (FB00–FB4F)

				
FB00	FB01	FB02	FB03	FB04

Emoticons (1F600–1F64F)

				
1F600	1F609	1F610	1F612	1F61B

Unencoded Glyphs

Small Capitals													
À	Á	Ă	Â	Ä	À	Ā	Ą	Å	Ã	Æ	É	B	C
a.sc	aacute.sc	abreve.sc	acircumflex.sc	adieresis.sc	agrave.sc	amacron.sc	aogonek.sc	aring.sc	atilde.sc	ae.sc	aeacute.sc	b.sc	c.sc
Ć	Č	Ç	Ĉ	Ċ	D	Ð	Ǻ	Đ	E	É	Ě	Ě	Ê
ccacute.sc	ccaron.sc	ccedilla.sc	ccircumflex.sc	cdotaccent.sc	d.sc	eth.sc	dcaron.sc	dcroat.sc	e.sc	eacute.sc	ebreve.sc	ecaron.sc	ecircumflex.sc
Ë	Ĕ	È	Ē	Ę	F	FI	FL	G	Ǧ	Ĝ	Ǻ	Ġ	H
edieresis.sc	edotaccent.sc	egrave.sc	emacron.sc	eogonek.sc	f.sc	fi.sc	fl.sc	g.sc	gbreve.sc	gcircumflex.sc	gcommaaccent.sc	gdotaccent.sc	h.sc
Ĥ	Ĥ	I	İ	Í	Ĭ	Î	Ï	Ì	IJ	Ī	Į	Ĩ	J
hbar.sc	hcircumflex.sc	i.sc	dotlessi.sc	iacute.sc	ibreve.sc	icircumflex.sc	idieresis.sc	igrave.sc	ij.sc	imacron.sc	iogonek.sc	itilde.sc	j.sc
J	Ĵ	K	Ꞥ	K	L	Ł	Ľ	Ĺ	Ł	Ł	M	N	Ñ
dotlessj.sc	jcircumflex.sc	k.sc	kcommaaccent.sc	kgreenlandic.sc	l.sc	lacute.sc	lcaron.sc	lcommaaccent.sc	ldot.sc	lslash.sc	m.sc	n.sc	nacute.sc
Ñ	Ꞥ	Ŋ	Ñ	O	Ó	Ö	Ô	Ö	Ò	Ő	Ō	Ø	Ø
ncaron.sc	ncommaaccent.sc	eng.sc	ntilde.sc	o.sc	oacute.sc	obreve.sc	ocircumflex.sc	odieresis.sc	ograve.sc	ohungarumlaut.sc	omacron.sc	oslash.sc	oslashacute.sc
Õ	Œ	P	Ɔ	Q	R	Ŕ	Ř	Ŗ	S	Ś	Š	Ş	Ŝ
otilde.sc	oe.sc	p.sc	thorn.sc	q.sc	r.sc	racute.sc	rcaron.sc	rcommaaccent.sc	s.sc	sacute.sc	scaron.sc	scedilla.sc	scircumflex.sc

Unencoded Glyphs

Ş scommaaccent.sc	ß germandbls.sc	Ŧ t.sc	ƒ tbar.sc	ř tcaron.sc	Ŧ tcedilla.sc	Ŧ tcommaaccent.sc	U u.sc	Ú uacute.sc	Ŭ ubreve.sc	Û ucircumflex.sc	Ü udieresis.sc	Ù ugrave.sc	Ű uhungarumlaut.sc
Ū umacron.sc	Ʈ uogonek.sc	Ů uring.sc	Ů utilde.sc	V v.sc	W w.sc	Ŵ wacute.sc	Ŷ wcircumflex.sc	Ẁ wdieresis.sc	Ẃ wgrave.sc	X x.sc	Y y.sc	Ý yacute.sc	ÿ ycircumflex.sc
ÿ ydieresis.sc	ÿ ygrave.sc	Z z.sc	Ž zacute.sc	Ž zcaron.sc	Ž zdotaccent.sc	А a-cy.sc	Б be-cy.sc	В ve-cy.sc	Г ge-cy.sc	Ґ gje-cy.sc	Ґ gheupturn-cy.sc	Д de-cy.sc	Е ie-cy.sc
Ě io-cy.sc	Ж zhe-cy.sc	З ze-cy.sc	И ii-cy.sc	Й iishort-cy.sc	К ka-cy.sc	Ѐ kje-cy.sc	Л el-cy.sc	М em-cy.sc	Н en-cy.sc	О o-cy.sc	П pe-cy.sc	Р er-cy.sc	С es-cy.sc
Т te-cy.sc	У u-cy.sc	Ў ushort-cy.sc	Ф ef-cy.sc	Х ha-cy.sc	Ч che-cy.sc	Ц tse-cy.sc	Ш sha-cy.sc	Щ shcha-cy.sc	Ѡ dze-cy.sc	Ъ softsign-cy.sc	Ъ hardsign-cy.sc	Ы yeru-cy.sc	Ь lje-cy.sc
Нь nje-cy.sc	Ѕ dze-cy.sc	Є e-cy.sc	Э ereversed-cy.sc	І i-cy.sc	İ yi-cy.sc	Ј je-cy.sc	Ѧ tshe-cy.sc	Ю iu-cy.sc	Я ia-cy.sc	Ѣ dje-cy.sc	ѣ yat-cy.sc	Ө fita-cy.sc	Ѡ izhitsa-cy.sc
Ɔ ghestroke-cy.sc	Ж zhedescender-cy.sc	Қ kadescender-cy.sc	Ң endescender-cy.sc	Ҥ hadescender-cy.sc	Ҷ chedescender-cy.sc	Һ shha-cy.sc	І palochka-cy.sc	Ә schwa-cy.sc	Й imacron-cy.sc	Ө obarred-cy.sc	Ū umacron-cy.sc	А alpha.sc	В beta.sc

Unencoded Glyphs

Γ gamma.sc	Δ delta.sc	Ε epsilon.sc	Ζ zeta.sc	Η eta.sc	Θ theta.sc	Ι iota.sc	Κ kappa.sc	Λ lambda.sc	Μ mu.sc	Ν nu.sc	Ξ xi.sc	Ο omicron.sc	Π pi.sc
Ρ rho.sc	Σ sigmafinal.sc	Σ sigma.sc	Τ tau.sc	Υ upsilon.sc	Φ phi.sc	Χ chi.sc	Ψ psi.sc	Ω omega.sc	ÿ upsilondieresis.sc	Ι iotatonos.sc	Ï iotadieresis.sc	Ι iotadieresis-tonos.sc	Υ upsilontonos.sc
Υ upsilondieresis.sc	Υ upsilondieresis-tonos.sc	Ο omicrontonos.sc	Ω omegatonos.sc	Α alphatonos.sc	Ε epsilontonos.sc	Η etatonos.sc	Α alphavaria.sc	Α alphaoxia.sc	Α alphaperispomeni.sc	Α alphavrachy.sc	Α alphamacron.sc	Ε epsilonvaria.sc	Ε epsilonoxia.sc
Η etavaria.sc	Η etaoxia.sc	Η etaperispomeni.sc	Ι iotavaria.sc	Ι iotaoxia.sc	Ι iotaperispomeni.sc	Ι iotavrachy.sc	Ι iotamacron.sc	Ι iotadialytikavaria.sc	Ι iotadialytikaoxia.sc	Ι iotadialytikaperispomeni.sc	Ο omicronvaria.sc	Ο omicronoxia.sc	Υ upsilonvaria.sc
Υ upsilonoxia.sc	Υ upsilonperispomeni.sc	Υ upsilonvrachy.sc	Υ upsilonmacron.sc	Υ upsilondialytikavaria.sc	Υ upsilondialytikaoxia.sc	Υ upsilondialytikaperispomeni.sc	Ω omegavaria.sc	Ω omegaoxia.sc	Ω omegaperispomeni.sc	¨ dieresiscomb.sc	· dotaccentcomb.sc	˘ gravecomb.sc	˙ acutecomb.sc
“ hungarumlautcomb.sc	ˆ circumflexcomb.sc	ˇ caroncomb.sc	˘ brevecomb.sc	◊ ringcomb.sc	˜ tildecomb.sc	— macroncomb.sc	‚ commaaccentcomb.sc	¸ cedillacomb.sc	¸ ogonekcomb.sc	Ÿ ustrait-cy.sc	Ÿ ustraitstroke-cy.sc		
Case Sensitive Forms													
¨ dieresiscomb.case	· dotaccentcomb.case	˘ gravecomb.case	˙ acutecomb.case	“ hungarumlautcomb.case	ˆ circumflexcomb.case	ˇ caroncomb.case	˘ brevecomb.case	◊ ringcomb.case	˜ tildecomb.case	— macroncomb.case	‚ commaaccentcomb.case	¸ cedillacomb.case	¸ ogonekcomb.case

Unencoded Glyphs



Localized Forms



Ligatures



Denominators



Numerators



Unencoded Glyphs

Slashed Zero

Ø

zero.tf.zero

Ø

zero.zero

Tabular Figures

0

zero.tf

1

one.tf

2

two.tf

3

three.tf

4

four.tf

5

five.tf

6

six.tf

7

seven.tf

8

eight.tf

9

nine.tf

1

one.tf.ss01

7

seven.tf.ss01

1/2

onehalf.tf

1/3

onethird.tf

2/3

twothirds.tf

1/4

onequarter.tf

3/4

threequarters.tf

1/8

oneeighth.tf

5/8

threeeighths.tf

7/8

fiveeighths.tf

7/8

seveneighths.tf

1/2

onehalf.tf.ss01

1/3

onethird.tf.ss01

1/4

onequarter.tf.ss01

1/8

oneeighth.tf.ss01

7/8

seveneighths.tf.ss01

#

numbersign.tf

Ç

cent.tf

¤

currency.tf

\$

dollar.tf

€

Euro.tf

f

florin.tf

£

sterling.tf

¥

yen.tf

%

percent.tf.ss01

‰

perthousand.tf.ss01

+

plus.tf

-

minus.tf

×

multiply.tf

÷

divide.tf

=

equal.tf

≠

notequal.tf

>

greater.tf

<

less.tf

≥

greaterequal.tf

≤

lessequal.tf

±

plusminus.tf

≈

approxequal.tf

~

asciitilde.tf

¬

logicalnot.tf

∞

infinity.tf

∏

product.tf

∑

summation.tf

∂

partialdiff.tf

%

percent.tf

‰

perthousand.tf

◊

lozenge.tf

§

section.tf

°

degree.tf

Nº

numero.tf

Stylistic Set 1

ɑ

a.ss01

á

aacute.ss01

ă

abreve.ss01

â

acircumflex.ss01

ä

adieresis.ss01

à

agrave.ss01

ā

amacron.ss01

ą

aogonek.ss01

å

aring.ss01

ã

atilde.ss01

ß

germandbls.ss01

1

one.ss01

7

seven.ss01

1

oneinferior.ss01

Unencoded Glyphs

7	1	7	1/2	1/3	1/4	1/8	7/8	‰	‱
seveninferior.ss01	onesuperior.ss01	sevensuperior.ss01	onehalf.ss01	onethird.ss01	onequarter.ss01	oneeighth.ss01	seveneighths.ss01	percent.ss01	perthousand.ss01
Other									
?	˘	˘							
.notdef	caron.alt	brevecomb-cy							