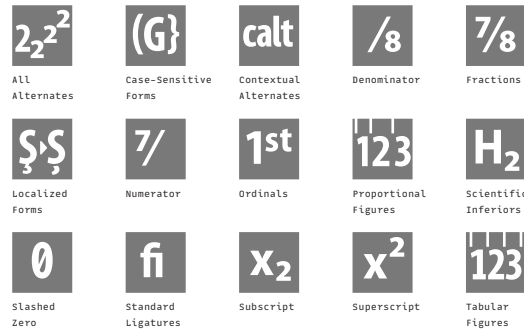


Technical Report [587 Glyphs]

Gute

Gute Runde Thin Italic
Gute Runde Light Italic
Gute Runde Italic
Gute Runde Medium Italic
Gute Runde BoldItalic
Gute Runde BlackItalic
Gute Sans Thin Italic
Gute Sans Light Italic
Gute Sans Italic
Gute Sans Medium Italic
Gute Sans Bold Italic
Gute Sans Black Italic
Gute Alte Thin Italic
Gute Alte Light Italic
Gute Alte Italic
Gute Alte Medium Italic
Gute Alte Bold Italic
Gute Alte Black Italic

OT-Features, Scripts & Languages



Supported Script(s):

Latin

54 languages and many more:

Afrikaans, Albanian, Basque, Bosnian, Breton, Corsican, Croatian, Czech, Danish, Dutch, English, Esperanto, Estonian, Faroese, Finnish, French, Galician, German, Greenlandic, Hungarian, Icelandic, Indonesian, Irish, Italian, Kurdish, Latvian, Leonese, Lithuanian, Luxembourgish, Malay, Malaysian, Malti, Manx, Norwegian, Occitan, Polish, Portuguese, Rhaeto-Romanic, Romanian, Sami, Scottish Gaelic, Serbian Latin, Slovak, Slovakian, Slovene, Slovenian, Sorbian (Lower), Sorbian (Upper), Spanish, Swahili, Swedish, Turkish, Turkmen, Walloon

Code Pages (this overview can happen to be incomplete)

Mac OS

Mac OS Central European

Mac OS Iceland

Mac OS Romanian

MS Windows

MS Windows 1250 Central European

MS Windows 1252 Western (ANSI)

MS Windows 1254 Turkish

MS Windows 1257 Baltic

ISO 8859

ISO 8859-1 Latin 1 (Western)

ISO 8859-2 Latin 2 (Central Europe)

ISO 8859-3 Latin 3 (Tu, Malt, Gal, Esp)

ISO 8859-4 Latin 4 (Baltic)

ISO 8859-9 Latin 5 (Turkish)

ISO 8859-15 Latin 9

Encoded Glyphs

Basic Latin (0000–007F)													
		!	"	#	\$	%	&	'	()	*	+	,
000D	0020	0021	0022	0023	0024	0025	0026	0027	0028	0029	002A	002B	002C
-	.	/	0	1	2	3	4	5	6	7	8	9	:
002D	002E	002F	0030	0031	0032	0033	0034	0035	0036	0037	0038	0039	003A
;	<	=	>	?	@	A	B	C	D	E	F	G	H
003B	003C	003D	003E	003F	0040	0041	0042	0043	0044	0045	0046	0047	0048
I	J	K	L	M	N	O	P	Q	R	S	T	U	V
0049	004A	004B	004C	004D	004E	004F	0050	0051	0052	0053	0054	0055	0056
W	X	Y	Z	[\]	^	_	`	a	b	c	d
0057	0058	0059	005A	005B	005C	005D	005E	005F	0060	0061	0062	0063	0064
e	f	g	h	i	j	k	l	m	n	o	p	q	r
0065	0066	0067	0068	0069	006A	006B	006C	006D	006E	006F	0070	0071	0072
s	t	u	v	w	x	y	z	{		}	~		
0073	0074	0075	0076	0077	0078	0079	007A	007B	007C	007D	007E		

Encoded Glyphs

Latin-1 Supplement (0080-00FF)													
00A0	00A1	00A2	00A3	00A4	00A5	00A6	00A7	00A8	00A9	00AA	00AB	00AC	00AD
®	–	°	±	²	³	´	μ	¶	·	¸	¹	º	»
¼	½	¾	¿	À	Á	Â	Ã	Ä	Å	Æ	Ç	È	É
Ê	Ë	Ì	Í	Î	Ï	Ð	Ñ	Ò	Ó	Ô	Õ	Ö	×
Ø	Ù	Ú	Û	Ü	Ý	Þ	ß	à	á	â	ã	ä	å
æ	ç	è	é	ê	ë	ì	í	î	ï	ð	ñ	ò	ó
ô	õ	ö	÷	ø	ù	ú	û	ü	ý	þ	ÿ		
00F4	00F5	00F6	00F7	00F8	00F9	00FA	00FB	00FC	00FD	00FE	00FF		

Encoded Glyphs

Latin Extended-A (0100–017F)																													
Ā	ā	Ă	ă	Ą	ą	Ć	ć	Ĉ	ĉ	Č	č	Ď	ď	0100	0101	0102	0103	0104	0105	0106	0107	0108	0109	010A	010B	010C	010D		
Ě	ě	Ď	ď	Ē	ē	Ě	ě	È	è	Ę	ę	Ě	ě	010E	010F	0110	0111	0112	0113	0114	0115	0116	0117	0118	0119	011A	011B		
Ĝ	ĝ	Ğ	ğ	Ġ	ġ	Ģ	ģ	Ĥ	ĥ	Ħ	ħ	Ĩ	ĩ	011C	011D	011E	011F	0120	0121	0122	0123	0124	0125	0126	0127	0128	0129		
Ī	ī	Ĳ	ĳ	Ĵ	ĵ	Ķ	ķ	Ĵ	ĵ	Ĵ	ĵ	Ķ	ķ	012A	012B	012C	012D	012E	012F	0130	0131	0132	0133	0134	0135	0136	0137		
Ķ	ķ	Ļ	ļ	Ł	ł	Ł	ł	Ł	ł	Ł	ł	Ń	ń	Ń	ń	0138	0139	013A	013B	013C	013D	013E	013F	0140	0141	0142	0143	0144	0145
Ń	ń	Ń	ń	Ń	ń	Ń	ń	Ń	ń	Ń	ń	Ń	ń	Ń	ń	0146	0147	0148	0149	014A	014B	014C	014D	014E	014F	0150	0151	0152	0153
Ŕ	ŕ	Ŗ	ŗ	Ř	ř	Ś	ś	Ŝ	ŝ	Ş	ş	Š	š	0154	0155	0156	0157	0158	0159	015A	015B	015C	015D	015E	015F	0160	0161		

Encoded Glyphs

Ŧ	ț	Ť	ť	Ʀ	Ƨ	Ũ	ũ	Ū	ū	Ů	ů	Ű	ű
0162	0163	0164	0165	0166	0167	0168	0169	016A	016B	016C	016D	016E	016F
Ŭ	ŭ	Ÿ	ÿ	Ŵ	ŵ	Ŷ	ÿ	ÿ	Ž	ž	Ž	ž	Ž
0170	0171	0172	0173	0174	0175	0176	0177	0178	0179	017A	017B	017C	017D
Ž													
017E													

Latin Extended-B (0180–024F)

f	Ā	æ	Ø	ø	Ş	ş	Ŧ	ț	Ĥ	ĥ	J
0192	01FC	01FD	01FE	01FF	0218	0219	021A	021B	021E	021F	0237

Spacing Modifier Letters (02B0–02FF)

ˆ	˘	ˉ	˘	•	◦	˜	¨	
02C6	02C7	02C9	02D8	02D9	02DA	02DB	02DC	02DD

Combining Diacritical Marks (0300–036F)

˘	˘	ˆ	˜	ˉ	˘	•	••	◦	¨	˘	˘	˘	•
0300	0301	0302	0303	0304	0306	0307	0308	030A	030B	030C	0312	0313	0323

˘	˘	˘	ˉ	ˉ
0326	0327	0328	0335	0336

Encoded Glyphs

Greek and Coptic (0370–03FF)

Δ	Ω	μ	π
0394	03A9	03BC	03C0

Latin Extended Additional (1E00–1EFF)

Ā	ā	Ď	ď	Ě	ě	Ĭ	ĭ	Ĵ	ĵ	Ŝ	ŝ	Ť	ť
1E02	1E03	1E0A	1E0B	1E1E	1E1F	1E40	1E41	1E56	1E57	1E60	1E61	1E6A	1E6B

Ẁ	ẁ	Ẃ	ẃ	Ẅ	ẅ	ẞ	Ỳ	ỳ
1E80	1E81	1E82	1E83	1E84	1E85	1E9E	1EF2	1EF3

General Punctuation (2000–206F)

—	—	—	—	‘	’	,	“	”	„	†	‡		
2007	200B	2012	2013	2014	2015	2018	2019	201A	201C	201D	201E	2020	2021

•	…	‰	<	>	/
2022	2026	2030	2039	203A	2044

Superscripts and Subscripts (2070–209F)

0	4	5	6	7	8	9	0	1	2	3	4	5	6
2070	2074	2075	2076	2077	2078	2079	2080	2081	2082	2083	2084	2085	2086

7	8	9
2087	2088	2089

Encoded Glyphs

Currency Symbols (20A0–20CF)

€

20AC

₹

20B9

₤

20BA

₲

20BD

Letterlike Symbols (2100–214F)

‰

2105

ℓ

2113

№

2116

©

2117

SM

2120

TM

2122

Ω

2126

e

212E

Number Forms (2150–218F)

 $\frac{1}{3}$

2153

 $\frac{2}{3}$

2154

 $\frac{1}{5}$

2155

 $\frac{2}{5}$

2156

 $\frac{3}{5}$

2157

 $\frac{4}{5}$

2158

 $\frac{1}{6}$

2159

 $\frac{5}{6}$

215A

 $\frac{1}{8}$

215B

 $\frac{3}{8}$

215C

 $\frac{5}{8}$

215D

 $\frac{7}{8}$

215E

 $\frac{1}{}$

215F

Arrows (2190–21FF)

←

2190

↑

2191

→

2192

↓

2193

↔

2194

↕

2195

↖

2196

↗

2197

↘

2198

↙

2199

Mathematical Operators (2200–22FF)

∂

2202

∅

2205

Δ

2206

Π

220F

Σ

2211

−

2212

/

2215

•

2219

√

221A

∞

221E

∫

222B

≈

2248

≠

2260

≤

2264

≥

2265

Enclosed Alphanumerics (2460–24FF)

①

2460

②

2461

③

2462

④

2463

⑤

2464

⑥

2465

⑦

2466

⑧

2467

⑨

2468

⑩

24EA

⓪

24FF

Encoded Glyphs

Geometric Shapes (25A0–25FF)



25CA

Dingbats (2700–27BF)

1

278A

2

278B

3

278C

4

278D

5

278E

6

278F

7

2790

8

2791

9

2792

Alphabetic Presentation Forms (FB00–FB4F)

fi

FB01

fl

FB02

Arabic Presentation Forms-B (FE70–FEFF)

FEFF

Unencoded Glyphs

Case Sensitive Forms													
••	•	˘	˙	˚	˛	ˆ	ˇ	˘	◌̊	˜	ˉ	ˆ	ˆ
dieresiscomb.case	dotaccentcomb.case	gravecomb.case	acutecomb.case	acutecomb.case.loclHhungarumlautcomb.cas UN	circumflexcomb.case	caroncomb.case	brevecomb.case	ringcomb.case	tildecomb.case	macroncomb.case	commaturnedabovecomb .case	commaaccentcomb.case	

Denominators									
0	1	2	3	4	5	6	7	8	9
zero.dnom	one.dnom	two.dnom	three.dnom	four.dnom	five.dnom	six.dnom	seven.dnom	eight.dnom	nine.dnom

Fraction
space.frac

Generic Alternates
˘
caroncomb.alt

Ligatures									
f	ḟ	r	ř	ř̃	ṛ̌	fi	fl	◯	●
f_short	fdotaccent_short	r_short	racute_short	rcaron_short	rcommaaccent_short	f_i	f_l	HELPER_circle	HELPER_circlefilled

Localized Forms
i
idotaccent

Numerators									
0	1	2	3	4	5	6	7	8	9
zero.numr	one.numr	two.numr	three.numr	four.numr	five.numr	six.numr	seven.numr	eight.numr	nine.numr

Unencoded Glyphs

Other													
Á	É	Í	Ó	Ú	á	é	í	ó	ú	?	'	¨	
Aacute.loclHUN	Eacute.loclHUN	Iacute.loclHUN	Oacute.loclHUN	Uacute.loclHUN	aacute.loclHUN	eacute.loclHUN	iacute.loclHUN	oacute.loclHUN	uacute.loclHUN	.notdef	acutecomb.loclHUN	dieresisnarrowcomb	
Slashed Zero													
0	0												
zero.zero	zero.zero.tf												
Tabular													
0	1	2	3	4	5	6	7	8	9	#	¢	¤	\$
zero.tf	one.tf	two.tf	three.tf	four.tf	five.tf	six.tf	seven.tf	eight.tf	nine.tf	numbersign.tf	cent.tf	currency.tf	dollar.tf
€	f	£	¥	+	-	×	÷	=	>	<	±	¬	§
euro.tf	florin.tf	sterling.tf	yen.tf	plus.tf	minus.tf	multiply.tf	divide.tf	equal.tf	greater.tf	less.tf	plusminus.tf	logicalnot.tf	section.tf