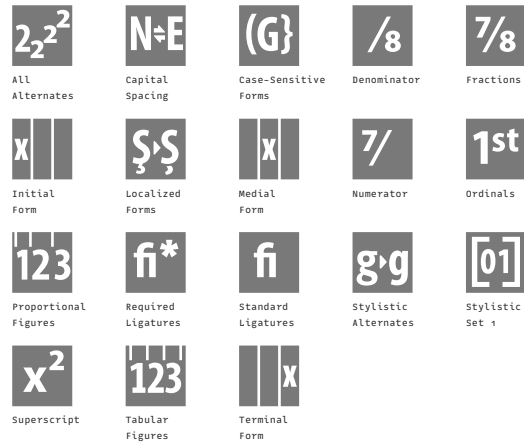


Technical Report [865 Glyphs]

# Midori

Midori Thin  
Midori UltraLight  
Midori Light  
Midori Regular  
Midori Book  
Midori Medium  
Midori Bold  
Midori ExtraBold  
Midori Heavy

## OT-Features, Scripts & Languages



### Supported Script(s):

Latin  
Cyrillic  
Arabic

### 53 languages and many more:

Afrikaans, Albanian, Basque, Bosnian, Breton, Bulgarian, Corsican, Croatian, Czech, Danish, Dutch, English, Estonian, Faroese, Finnish, French, Galician, German, Hungarian, Icelandic, Indonesian, Irish, Italian, Kurdish, Latvian, Leonese, Lithuanian, Luxembourgish, Malay, Malaysian, Manx, Norwegian, Occitan, Polish, Portuguese, Rhaeto-Romanic, Romanian, Russian, Scottish Gaelic, Serbian Latin, Slovak, Slovakian, Slovene, Slovenian, Sorbian (Lower), Sorbian (Upper), Spanish, Swahili, Swedish, Turkish, Turkmen, Ukrainian, Walloon

Code Pages (this overview can happen to be incomplete)

## Mac OS ##

Mac OS Central European

Mac OS Cyrillic

Mac OS Ukrainian

## MS Windows ##

MS Windows 1250 Central European

MS Windows 1251 Cyrillic

MS Windows 1252 Western (ANSI)

MS Windows 1254 Turkish

MS Windows 1256 Arabic

MS Windows 1257 Baltic

## ISO 8859 ##

ISO 8859-1 Latin 1 (Western)

ISO 8859-2 Latin 2 (Central Europe)

ISO 8859-5 Cyrillic

ISO 8859-6 Arabic

ISO 8859-9 Latin 5 (Turkish)

ISO 8859-15 Latin 9

## Encoded Glyphs

Basic Latin (0000–007F)													
		!	"	#	\$	%	&	'	(	)	*	+	,
000D	0020	0021	0022	0023	0024	0025	0026	0027	0028	0029	002A	002B	002C
-	.	/	0	1	2	3	4	5	6	7	8	9	:
002D	002E	002F	0030	0031	0032	0033	0034	0035	0036	0037	0038	0039	003A
;	<	=	>	?	@	A	B	C	D	E	F	G	H
003B	003C	003D	003E	003F	0040	0041	0042	0043	0044	0045	0046	0047	0048
I	J	K	L	M	N	O	P	Q	R	S	T	U	V
0049	004A	004B	004C	004D	004E	004F	0050	0051	0052	0053	0054	0055	0056
W	X	Y	Z	[	\	]	^	_	`	a	b	c	d
0057	0058	0059	005A	005B	005C	005D	005E	005F	0060	0061	0062	0063	0064
e	f	g	h	i	j	k	l	m	n	o	p	q	r
0065	0066	0067	0068	0069	006A	006B	006C	006D	006E	006F	0070	0071	0072
s	t	u	v	w	x	y	z	{		}	~		
0073	0074	0075	0076	0077	0078	0079	007A	007B	007C	007D	007E		

## Encoded Glyphs

Latin-1 Supplement (0080-00FF)													
		ı	ç	£	¤	¥	¦	§	¨	©	ª	«	¬
0081	00A0	00A1	00A2	00A3	00A4	00A5	00A6	00A7	00A8	00A9	00AA	00AB	00AC
–	®	ˉ	◦	±	²	³	´	µ	¶	·	¸	¹	º
00AD	00AE	00AF	00B0	00B1	00B2	00B3	00B4	00B5	00B6	00B7	00B8	00B9	00BA
»	¼	½	¾	¿	À	Á	Â	Ã	Ä	Å	Æ	Ç	È
00BB	00BC	00BD	00BE	00BF	00C0	00C1	00C2	00C3	00C4	00C5	00C6	00C7	00C8
É	Ê	Ë	Ì	Í	Î	Ï	Ð	Ñ	Ò	Ó	Ô	Õ	Ö
00C9	00CA	00CB	00CC	00CD	00CE	00CF	00D0	00D1	00D2	00D3	00D4	00D5	00D6
×	Ø	Ù	Ú	Û	Ü	Ý	Þ	ß	à	á	â	ã	ä
00D7	00D8	00D9	00DA	00DB	00DC	00DD	00DE	00DF	00E0	00E1	00E2	00E3	00E4
å	æ	ç	è	é	ê	ë	ì	í	î	ï	ð	ñ	ò
00E5	00E6	00E7	00E8	00E9	00EA	00EB	00EC	00ED	00EE	00EF	00F0	00F1	00F2
ó	ô	õ	ö	÷	ø	ù	ú	û	ü	ý	þ	ÿ	
00F3	00F4	00F5	00F6	00F7	00F8	00F9	00FA	00FB	00FC	00FD	00FE	00FF	

## Encoded Glyphs

Latin Extended-A (0100–017F)																											
Ā	ā	Ă	ă	Ą	ą	Ć	ć	Ĉ	ĉ	Č	č	Ď	ď	0100	0101	0102	0103	0104	0105	0106	0107	010A	010B	010C	010D	010E	010F
Đ	đ	Ē	ē	È	è	Ě	ě	Ě	ě	Ğ	ğ	Ġ	ġ	0110	0111	0112	0113	0116	0117	0118	0119	011A	011B	011E	011F	0120	0121
Ĝ	ĝ	Ĥ	ĥ	Ī	ī	Ĵ	ĵ	İ	ı	Ĳ	ĳ	Ķ	ķ	0122	0123	0126	0127	012A	012B	012E	012F	0130	0131	0132	0133	0136	0137
Ĺ	ĺ	Ł	ł	Ľ	ľ	Ł	ł	Ł	ł	Ń	ń	Ņ	ņ	0139	013A	013B	013C	013D	013E	013F	0140	0141	0142	0143	0144	0145	0146
Ň	ň	Ŋ	ŋ	Ō	ō	Ŏ	ö	Œ	œ	Ŕ	ř	Ŗ	ŗ	0147	0148	014A	014B	014C	014D	0150	0151	0152	0153	0154	0155	0156	0157
Ř	ř	Ś	ś	Ş	ş	Š	š	Ţ	ţ	Ť	ť	Ŧ	ŧ	0158	0159	015A	015B	015E	015F	0160	0161	0162	0163	0164	0165	0166	0167
Ū	ū	Ů	ů	Ů	ů	Ų	ų	Ŵ	ŵ	Ŷ	ŷ	Ÿ	Ž	016A	016B	016E	016F	0170	0171	0172	0173	0174	0175	0176	0177	0178	0179

## Encoded Glyphs

ž	Ž	ž	Ž	ž
017A	017B	017C	017D	017E

Latin Extended-B (0180-024F)													
f	Ǻ	ǻ	ǿ	ǿ	Ǿ	ǿ	Ǿ	ǿ	ǿ	ǿ	ǿ	ǿ	
0192	01CD	01CE	01CF	01D0	01D1	01D2	01D3	01D4	01D5	01D6	01D7	01D8	01D9

ǿ	Ǿ	ǿ	Ş	ş	Ţ	ţ	J
01DA	01DB	01DC	0218	0219	021A	021B	0237

Spacing Modifier Letters (02B0-02FF)								
ˆ	˘	ˉ	˘	˙	˚	˛	˜	˝
02C6	02C7	02C9	02D8	02D9	02DA	02DB	02DC	02DD

Combining Diacritical Marks (0300-036F)														
˘	˘	ˆ	˜	ˉ	˘	˙	˙	˚	˝	˘	˘	˘	˘	˘
0300	0301	0302	0303	0304	0306	0307	0308	030A	030B	030C	0326	0327	0328	0329

Cyrillic (0400-04FF)													
Ë	Ғ	Ґ	Є	Ѕ	І	İ	Ј	Љ	Њ	Ң	Ќ	Ў	Ҫ
0401	0402	0403	0404	0405	0406	0407	0408	0409	040A	040B	040C	040E	040F

А	Б	В	Г	Д	Е	Ж	З	И	Й	К	Л	М	Н
0410	0411	0412	0413	0414	0415	0416	0417	0418	0419	041A	041B	041C	041D

Encoded Glyphs

О	П	Р	С	Т	У	Ф	Х	Ц	Ч	Ш	Щ	Ъ	Ы
041E	041F	0420	0421	0422	0423	0424	0425	0426	0427	0428	0429	042A	042B
Ь	Э	Ю	Я	а	б	в	г	д	е	ж	з	и	й
042C	042D	042E	042F	0430	0431	0432	0433	0434	0435	0436	0437	0438	0439
К	Л	М	Н	О	П	р	С	Т	у	ф	х	ц	ч
043A	043B	043C	043D	043E	043F	0440	0441	0442	0443	0444	0445	0446	0447
Ш	Щ	Ъ	Ы	ь	э	ю	я	ё	ђ	ѓ	€	ѕ	і
0448	0449	044A	044B	044C	044D	044E	044F	0451	0452	0453	0454	0455	0456
ï	ĵ	љ	њ	ћ	ќ	ў	џ	џ	Ѡ	ѡ	Ѵ	ѵ	
0457	0458	0459	045A	045B	045C	045E	045F	0462	0463	0472	0473	0474	0475
Ґ	ґ	ƒ	ƒ	Ж	ж	Қ	қ	Ң	ң	Ү	ү	Ұ	ұ
0490	0491	0492	0493	0496	0497	049A	049B	04A2	04A3	04AE	04AF	04B0	04B1
Х	х	Ц	ц	Һ	һ	І	і	Ә	ә	Й	й	Ө	ө
04B2	04B3	04B6	04B7	04BA	04BB	04C0	04CF	04D8	04D9	04E2	04E3	04E8	04E9



Encoded Glyphs

ȳ	ȳ													
04EE	04EF													
Arabic (0600-06FF)														
،	ط	؛	؟	ء	آ	أ	ؤ	إ	ئ	ا	ب	ة	ت	
060C	0615	061B	061F	0621	0622	0623	0624	0625	0626	0627	0628	0629	062A	
ث	ج	ح	خ	ر	ز	ر	ز	س	ش	ص	ض	ط	ظ	
062B	062C	062D	062E	062F	0630	0631	0632	0633	0634	0635	0636	0637	0638	
ع	غ	ـ	ف	ق	ك	ل	م	ن	ه	و	ى	ي	=	
0639	063A	0640	0641	0642	0643	0644	0645	0646	0647	0648	0649	064A	064B	
م	=	،	م	،	س	ه	ـ	ء	ء	ر	ـ	ا	ـ	
064C	064D	064E	064F	0650	0651	0652	0653	0654	0655	0656	0660	0661	0662	
س	ع	و	ـ	ـ	ـ	ـ	ـ	ـ	ـ	ـ	ـ	ـ	ـ	
0663	0664	0665	0666	0667	0668	0669	066A	066B	066C	066D	066E	066F	0670	
أ	ط	پ	چ	ر	ر	ژ	ف	ق	ک	گ	س	ه	و	
0671	0679	067E	0686	0688	0691	0698	06A1	06A4	06A9	06AF	06BA	06BE	06C0	

## Encoded Glyphs

o	õ	ö	Ů	Ů	Ů̃	-	.	l	ƒ	ƒ	ƒ	o	ƒ
06C1	06C2	06C3	06CC	06D2	06D3	06D4	06F0	06F1	06F2	06F3	06F4	06F5	06F6

v	^	q
06F7	06F8	06F9

Latin Extended Additional (1E00–1EFF)							
Ŵ	ŵ	Ŷ	ŷ	Ÿ	Ź	Ź	ÿ
1E80	1E81	1E82	1E83	1E84	1E85	1EF2	1EF3

General Punctuation (2000–206F)													
	↑	↑	↑	—	—	—	—	‘	’	,	“	”	”
200C	200D	200E	200F	2012	2013	2014	2015	2018	2019	201A	201C	201D	201E

†	‡	•	…			‰	<	>	/
2020	2021	2022	2026	202C	202D	2030	2039	203A	2044

Superscripts and Subscripts (2070–209F)	
₄	
2074	

Currency Symbols (20A0–20CF)	
€	
20AC	

## Encoded Glyphs

### Letterlike Symbols (2100–214F)

N <sup>o</sup>	™	Ω	e
2116	2122	2126	212E

### Mathematical Operators (2200–22FF)

∂	∅	Δ	∏	Σ	−	/	·	√	∞	∫	≈	≠	≤
2202	2205	2206	220F	2211	2212	2215	2219	221A	221E	222B	2248	2260	2264

≥
2265

### Geometric Shapes (25A0–25FF)

◊	⦿
25CA	25CC

### Alphabetic Presentation Forms (FB00–FB4F)

fi	fl
FB01	FB02

### Arabic Presentation Forms-A (FB50–FDFF)

ا	ب	پ	پ	ط	ر	ر	ق	ق	ق	چ	چ	چ	ط
FB51	FB57	FB58	FB59	FB67	FB68	FB69	FB6B	FB6C	FB6D	FB7B	FB7C	FB7D	FB89
ژ	ر	ک	ک	ک	گ	گ	گ	ح	د	ن	ز	ص	ه
FB8B	FB8D	FB8F	FB90	FB91	FB93	FB94	FB95	FB9F	FBA5	FBA7	FBA8	FBA9	FBAB

Encoded Glyphs

ه	ه	ح	ح	.	.	..	..	∴	∴	∴	∴	∴	∴
FBAC	FBAD	FBAF	FBB1	FBB2	FBB3	FBB4	FBB5	FBB6	FBB7	FBB8	FBB9	FBBA	FBBB
:	:	ي	ي	ي	{	}							
FBBD	FBBE	FBFD	FBFE	FBBF	FD3E	FD3F							
Arabic Presentation Forms-B (FE70–FEFF)													
آ	أ	ؤ	إ	ئ	ر	د	ا	ب	ب	ب	ة	ت	ز
FE82	FE84	FE86	FE88	FE8A	FE8B	FE8C	FE8E	FE90	FE91	FE92	FE94	FE96	FE97
ت	ث	ث	ث	ج	ج	ج	ح	د	د	خ	ذ	ذ	د
FE98	FE9A	FE9B	FE9C	FE9E	FE9F	FEA0	FEA2	FEA3	FEA4	FEA6	FEA7	FEA8	FEAA
ذ	ر	ز	س	س	س	ش	ش	ش	ص	ص	ص	ض	ظ
FEAC	FEAE	FEB0	FEB2	FEB3	FEB4	FEB6	FEB7	FEB8	FEBA	FEBB	FEBC	FEBE	FEBF
ض	ط	ط	ط	ظ	ظ	ظ	ع	ع	ه	ف	غ	ف	ف
FEC0	FEC2	FEC3	FEC4	FEC6	FEC7	FEC8	FECA	FECB	FECF	FEE0	FEE2	FEE3	FEE4
ف	ف	ق	ق	ق	ك	ك	ك	ل	ل	ل	م	م	م
FED3	FED4	FED6	FED7	FED8	FEDA	FEDB	FEDC	FEE0	FEE1	FEE2	FEE3	FEE4	FEE4

Encoded Glyphs

ن	ز	ذ	د	ه	ه	و	ي	ي	ي	ي	لآ	لآ	لآ
FE E6	FE E7	FE E8	FE EA	FE EB	FE EC	FE EE	FE F0	FE F2	FE F3	FE F4	FE F5	FE F6	FE F7
لآ	لآ	لآ	لا	لا									
FE F8	FE F9	FE FA	FE FB	FE FC									

## Unencoded Glyphs

### Case Sensitive Forms

( parenleft.case	) parenright.case	{ braceleft.case	} braceright.case	[ bracketleft.case	] bracketright.case	- hyphen.case	- softhyphen.case	- endash.case	- emdash.case	« guillemetleft.case	» guillemetright.case	< guilsinglleft.case	> guilsinglright.case
- firsttonechinese.case	` gravecomb.case	´ acutecomb.case	¨ hungarumlautcomb.case	˘ caroncomb.case	ˆ brevecomb.case	˚ ringcomb.case	˜ tildecomb.case	ˉ macroncomb.case	˛ ogonekcomb.case	˘ brevecomb-cy.case			

### Localized Forms

ı idotaccent
-----------------

### Ligatures

ﻻ lam_alefwasla-ar
-----------------------

### Denominators

1 one.dnom	2 two.dnom	3 three.dnom	4 four.dnom
---------------	---------------	-----------------	----------------

### Numerators

1 one.numr	2 two.numr	3 three.numr	4 four.numr
---------------	---------------	-----------------	----------------

### Tabular Figures

0 zero.tf	1 one.tf	2 two.tf	3 three.tf	4 four.tf	5 five.tf	6 six.tf	7 seven.tf	8 eight.tf	9 nine.tf
--------------	-------------	-------------	---------------	--------------	--------------	-------------	---------------	---------------	--------------

## Unencoded Glyphs

Stylistic Set 1													
ā	á	ă	ǎ	â	ä	à	ā	ą	å	ã	æ	ǎ	ā
a.ss01	aaacute.ss01	abreve.ss01	acaron.ss01	acircumflex.ss01	adieresis.ss01	agrave.ss01	amacron.ss01	aogonek.ss01	aring.ss01	atilde.ss01	ae.ss01	ordfeminine.ss01	a-cy.ss01
Fraction													
space.frac													
Other													
ı	ا	ل	و	ر	ر	ع	ه	و	ق	ك	ن	ة	لا
idotless.001	alef-ar.short	alef-ar.fina.short	behdotless-ar.fina	behdotless-ar.medi	behdotless-ar.init	fehdotless-ar.fina	fehdotless-ar.medi	fehdotless-ar.init	qafdotless-ar.fina	kafdotless-ar.fina	hehgoalHamzaabove-ar.fina	tehMarbutagoal-ar.fina	Lam_alefWasla-ar.fina
ك	ر	ل	؟	‘	•	∴	و	ن	ن	ن	ن	ن	ن
kafdotless-ar	four-persian.urdu	seven-persian.urdu	.notdef	caron.alt	dotcenter-ar	threedotsdowncenter-ar	wasla-ar	hamzacementer-ar	hamzaaboveDamma-ar	hamzaaboveDammatan-ar	hamzaaboveFatha-ar	hamzaaboveFathatan-ar	hamzaaboveSukun-ar
ن	ن	ا	ا	ا	ا	ا	ا	ا	ا	ا	ا	ا	ا
hamzabelowKasra-ar	hamzabelowKasratan-ar	shaddaAlefabove-ar	shaddaDamma-ar	shaddaDammatan-ar	shaddaFatha-ar	shaddaFathatan-ar	shaddaKasra-ar	shaddaKasratan-ar	noonghunnaabove-ar	brevecomb-cy	tatweel-ar.narrow		