

Technical Report [1223 Glyphs]

Quist

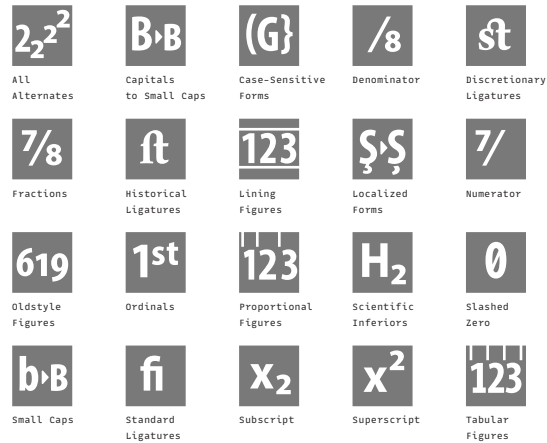
Quist Regular

Quist Medium

Quist Bold

Quist Headline

OT-Features, Scripts & Languages



Supported Script(s):

Latin
Cyrillic
Greek

56 languages and many more:

Afrikaans, Albanian, Basque, Bosnian, Breton, Bulgarian, Corsican, Czech, Danish, Dutch, English, Esperanto, Estonian, Faroese, Finnish, French, Galician, German, Greek, Greenlandic, Hungarian, Icelandic, Indonesian, Irish, Italian, Kurdish, Latvian, Leonese, Lithuanian, Luxembourgish, Malay, Malaysian, Malti, Manx, Norwegian, Occitan, Polish, Portuguese, Rhaeto-Romanic, Romanian, Russian, Sami, Scottish Gaelic, Serbian Latin, Slovak, Slovene, Sorbian (Lower), Sorbian (Upper), Spanish, Swahili, Swedish, Turkish, Turkmen, Ukrainian, Vietnamese, Walloon

Code Pages (this overview can happen to be incomplete)

Mac OS

Mac OS Central European

Mac OS Cyrillic

Mac OS Greek

Mac OS Iceland

Mac OS Romanian

Mac OS Ukrainian

MS Windows

MS Windows 1251 Cyrillic

MS Windows 1252 Western (ANSI)

MS Windows 1253 Greek

MS Windows 1254 Turkish

MS Windows 1257 Baltic

MS Windows 1258 Vietnamese

ISO 8859

ISO 8859-1 Latin 1 (Western)

ISO 8859-3 Latin 3 (Tu, Malt, Gal, Esp)

ISO 8859-4 Latin 4 (Baltic)

ISO 8859-5 Cyrillic

ISO 8859-9 Latin 5 (Turkish)

ISO 8859-15 Latin 9

Encoded Glyphs

Basic Latin (0000–007F)													
		!	"	#	\$	%	&	'	()	*	+	,
000D	0020	0021	0022	0023	0024	0025	0026	0027	0028	0029	002A	002B	002C
-	.	/	0	1	2	3	4	5	6	7	8	9	:
002D	002E	002F	0030	0031	0032	0033	0034	0035	0036	0037	0038	0039	003A
;	<	=	>	?	@	A	B	C	D	E	F	G	H
003B	003C	003D	003E	003F	0040	0041	0042	0043	0044	0045	0046	0047	0048
I	J	K	L	M	N	O	P	Q	R	S	T	U	V
0049	004A	004B	004C	004D	004E	004F	0050	0051	0052	0053	0054	0055	0056
W	X	Y	Z	[\]	^	_	`	a	b	c	d
0057	0058	0059	005A	005B	005C	005D	005E	005F	0060	0061	0062	0063	0064
e	f	g	h	i	j	k	l	m	n	o	p	q	r
0065	0066	0067	0068	0069	006A	006B	006C	006D	006E	006F	0070	0071	0072
s	t	u	v	w	x	y	z	{		}	~		
0073	0074	0075	0076	0077	0078	0079	007A	007B	007C	007D	007E		

Encoded Glyphs

Latin-1 Supplement (0080–00FF)													
00A0	00A1	00A2	00A3	00A4	00A5	00A6	00A7	00A8	00A9	00AA	00AB	00AC	00AD
00AE	00AF	00B0	00B1	00B2	00B3	00B4	00B5	00B6	00B7	00B8	00B9	00BA	00BB
00BC	00BD	00BE	00BF	00C0	00C1	00C2	00C3	00C4	00C5	00C6	00C7	00C8	00C9
00CA	00CB	00CC	00CD	00CE	00CF	00D0	00D1	00D2	00D3	00D4	00D5	00D6	00D7
00D8	00D9	00DA	00DB	00DC	00DD	00DE	00DF	00E0	00E1	00E2	00E3	00E4	00E5
00E6	00E7	00E8	00E9	00EA	00EB	00EC	00ED	00EE	00EF	00F0	00F1	00F2	00F3
00F4	00F5	00F6	00F7	00F8	00F9	00FA	00FB	00FC	00FD	00FE	00FF		

Encoded Glyphs

Latin Extended-A (0100–017F)																											
Ā	ā	Ă	ă	Ą	ą	Ć	ć	Ĉ	ĉ	Ċ	ċ	Č	č	0100	0101	0102	0103	0104	0105	0106	0107	0108	0109	010A	010B	010C	010D
Ď	d'	Đ	đ	Ē	ē	Ě	ě	È	è	Ě	ě	Ě	ě	010E	010F	0110	0111	0112	0113	0114	0115	0116	0117	0118	0119	011A	011B
Ĝ	ĝ	Ğ	ğ	Ġ	ġ	Ģ	ģ	Ĥ	ĥ	Ħ	ħ	Ĩ	ĩ	011C	011D	011E	011F	0120	0121	0122	0123	0124	0125	0126	0127	0128	0129
Ī	ī	Ĳ	ĳ	Ĵ	ĵ	İ	ı	Ĳ	ĳ	Ĵ	ĵ	Ķ	ķ	012A	012B	012C	012D	012E	012F	0130	0131	0132	0133	0134	0135	0136	0137
Ķ	Ļ	ļ	Ł	ł	Ł	ł	Ł	ł	Ł	ł	Ń	ń	Ņ	0138	0139	013A	013B	013C	013D	013E	013F	0140	0141	0142	0143	0144	0145
Ŋ	Ń	ń	ŋ	Ņ	ņ	Ō	ō	Ŏ	ö	Ŏ	ö	Œ	œ	0146	0147	0148	0149	014A	014B	014C	014D	014E	014F	0150	0151	0152	0153
Ŕ	ŕ	Ŗ	ŗ	Ř	ř	Ś	ś	Ŝ	ŝ	Ş	ş	Š	š	0154	0155	0156	0157	0158	0159	015A	015B	015C	015D	015E	015F	0160	0161

Encoded Glyphs

Š	š	ẏ	ẏ	Ū	ū	Ū	ū	Ŭ	ŭ	Ű	ű	Ű	ű
0164	0165	0166	0167	0168	0169	016A	016B	016C	016D	016E	016F	0170	0171
Ț	ț	Ŵ	ŵ	Ȳ	ȳ	ÿ	Ž	ž	Ż	ż	Ž	ž	ƒ
0172	0173	0174	0175	0176	0177	0178	0179	017A	017B	017C	017D	017E	017F
Latin Extended-B (0180–024F)													
ƒ	Œ	œ	Ů	ů	Ě	ě	Ø	ø	Ş	ş	Ț	ț	ț
0192	01A0	01A1	01AF	01B0	01FC	01FD	01FE	01FF	0218	0219	021A	021A	021B
ț	Ț												
021B	0237												
Spacing Modifier Letters (02B0–02FF)													
ˆ	˘	ˉ	˘	˙	◌◌	◌◌	˜	˝					
02C6	02C7	02C9	02D8	02D9	02DA	02DB	02DC	02DD					
Combining Diacritical Marks (0300–036F)													
˘	˙	˜	◌◌	◌◌	◌◌	◌◌	◌◌						
0300	0301	0303	0309	0312	0323	0326							
Greek and Coptic (0370–03FF)													
;	´	ˆ	Α	·	Ε	Η	Ι	Ο	Υ	Ω	ΐ	Α	Β
037E	0384	0385	0386	0387	0388	0389	038A	038C	038E	038F	0390	0391	0392

Encoded Glyphs

Γ 0393	Δ 0394	Ε 0395	Ζ 0396	Η 0397	Θ 0398	Ι 0399	Κ 039A	Λ 039B	Μ 039C	Ν 039D	Ξ 039E	Ο 039F	Π 03A0
Ρ 03A1	Σ 03A3	Τ 03A4	Υ 03A5	Φ 03A6	Χ 03A7	Ψ 03A8	Ω 03A9	ϊ 03AA	ϋ 03AB	ά 03AC	έ 03AD	ή 03AE	ί 03AF
ύ 03B0	α 03B1	β 03B2	γ 03B3	δ 03B4	ε 03B5	ζ 03B6	η 03B7	θ 03B8	ι 03B9	κ 03BA	λ 03BB	μ 03BC	ν 03BD
ξ 03BE	ο 03BF	π 03C0	ρ 03C1	ς 03C2	σ 03C3	τ 03C4	υ 03C5	φ 03C6	χ 03C7	ψ 03C8	ω 03C9	ϊ 03CA	ϋ 03CB
ό 03CC	ύ 03CD	ώ 03CE											
Cyrillic (0400–04FF)													
Ё 0401	Ѡ 0402	Ґ 0403	Є 0404	Ѕ 0405	І 0406	Ї 0407	Ј 0408	Љ 0409	Њ 040A	Ѣ 040B	Ќ 040C	Ў 040E	Ѡ 040F
А 0410	Б 0411	В 0412	Г 0413	Д 0414	Е 0415	Ж 0416	З 0417	И 0418	Й 0419	К 041A	Л 041B	М 041C	Н 041D

Encoded Glyphs

О 041E	П 041F	Р 0420	С 0421	Т 0422	У 0423	Ф 0424	Х 0425	Ц 0426	Ч 0427	Ш 0428	Щ 0429	Ъ 042A	Ы 042B
Ь 042C	Э 042D	Ю 042E	Я 042F	а 0430	б 0431	в 0432	г 0433	д 0434	е 0435	ж 0436	з 0437	и 0438	й 0439
К 043A	Л 043B	М 043C	Н 043D	О 043E	П 043F	р 0440	с 0441	т 0442	у 0443	ф 0444	х 0445	ц 0446	ч 0447
Ш 0448	Щ 0449	Ъ 044A	Ы 044B	Ь 044C	Э 044D	Ю 044E	Я 044F	ё 0451	ђ 0452	ѓ 0453	€ 0454	ƒ 0455	ı 0456
ï 0457	ĵ 0458	љ 0459	њ 045A	ћ 045B	ќ 045C	ŷ 045E	џ 045F	Ѡ 0462	ѡ 0463	Θ 0472	ϑ 0473	V 0474	v 0475
Ґ 0490	ґ 0491	Ғ 0492	ғ 0493	Җ 0496	җ 0497	Ҙ 0498	ҙ 0499	Қ 049A	қ 049B	К 049C	к 049D	К 04A0	к 04A1
Ң 04A2	ң 04A3	Ҫ 04AA	ҫ 04AB	Ү 04AE	ү 04AF	Ұ 04B0	ұ 04B1	Х 04B2	х 04B3	Ҷ 04B8	ҷ 04B9	Һ 04BA	һ 04BB

Encoded Glyphs

ǀ	ǂ	ǃ	Ǆ	ǅ	ǆ	Ǉ	ǈ	ǉ	Ǌ	ǋ	ǌ		
04C0	04CB	04CC	04CF	04D8	04D9	04E2	04E3	04E8	04E9	04EE	04EF		
Latin Extended Additional (1E00-1EFF)													
ǎ	Ǐ	ǐ	Ǒ	ǒ	Ǔ	ǔ	ǖ	Ǘ	Ǚ	ǚ	ǜ	ǝ	Ǟ
1E02	1E03	1E0A	1E0B	1E1E	1E1F	1E40	1E41	1E56	1E57	1E60	1E61	1E6A	1E6B
ǟ	Ǡ	ǡ	Ǣ	ǣ	Ǥ	ǥ	Ǧ	ǧ	Ǩ	ǩ	Ǫ	ǫ	Ǭ
1E6C	1E6D	1E80	1E81	1E82	1E83	1E84	1E85	1EA0	1EA1	1EA2	1EA3	1EA4	1EA5
ǭ	Ǯ	ǯ	ǰ	Ǳ	ǲ	ǳ	Ǵ	ǵ	Ƕ	Ƿ	Ǹ	ǹ	Ǻ
1EA6	1EA7	1EA8	1EA9	1EAA	1EAB	1EAC	1EAD	1EAE	1EAF	1EB0	1EB1	1EB2	1EB3
ǻ	Ǽ	ǽ	ǿ	Ǿ	ǿ	ǿ	ǿ	ǿ	ǿ	ǿ	ǿ	ǿ	ǿ
1EB4	1EB5	1EB6	1EB7	1EB8	1EB9	1EBA	1EBB	1EBC	1EBD	1EBE	1EBF	1EC0	1EC1
ǿ	ǿ	ǿ	ǿ	ǿ	ǿ	ǿ	ǿ	ǿ	ǿ	ǿ	ǿ	ǿ	ǿ
1EC2	1EC3	1EC4	1EC5	1EC6	1EC7	1EC8	1EC9	1ECA	1ECB	1ECC	1ECD	1ECE	1ECF
ǿ	ǿ	ǿ	ǿ	ǿ	ǿ	ǿ	ǿ	ǿ	ǿ	ǿ	ǿ	ǿ	ǿ
1ED0	1ED1	1ED2	1ED3	1ED4	1ED5	1ED6	1ED7	1ED8	1ED9	1EDA	1EDB	1EDC	1EDD

Encoded Glyphs

Ŏ	ŏ	Õ	õ	Ơ	ơ	Ụ	ụ	Ủ	ủ	Ú	ú	Ù	ù
1EDE	1EDF	1EE0	1EE1	1EE2	1EE3	1EE4	1EE5	1EE6	1EE7	1EE8	1EE9	1EEA	1EEB
Ū	ū	Ũ	ũ	Ự	ự	Ỳ	ỳ	Ỵ	ỵ	Ỷ	ỷ	Ỹ	ỹ
1EEC	1EED	1EEE	1EEF	1EF0	1EF1	1EF2	1EF3	1EF4	1EF5	1EF6	1EF7	1EF8	1EF9
General Punctuation (2000–206F)													
—	—	—	—	‘	’	,	“	”	”	†	‡	▪	•
2012	2013	2014	2015	2018	2019	201A	201C	201D	201E	2020	2021	2022	2024
..	...	‰	<	>	!!	/							
2025	2026	2030	2039	203A	203C	2044							
Superscripts and Subscripts (2070–209F)													
0	í	4	5	6	7	8	9	()	ñ	0	1	2
2070	2071	2074	2075	2076	2077	2078	2079	207D	207E	207F	2080	2081	2082
3	4	5	6	7	8	9	()					
2083	2084	2085	2086	2087	2088	2089	208D	208E					
Currency Symbols (20A0–20CF)													
¢	₫	€											
20A1	20AB	20AC											

Encoded Glyphs

Letterlike Symbols (2100–214F)

2113

2116

2122

2126

212E

Number Forms (2150–218F)

2153

2154

215B

215C

215D

215E

Arrows (2190–21FF)

2190

2191

2192

2193

2194

2195

2196

2197

2198

2199

Mathematical Operators (2200–22FF)

2202

2206

220F

2211

2212

2215

2219

221A

221E

222B

2248

2260

2264

2265

Geometric Shapes (25A0–25FF)

25CA

Private Use Area (E000–F8FF)

F6DD

Alphabetic Presentation Forms (FB00–FB4F)

FB01

FB02

Unencoded Glyphs

Case Sensitive Forms													
¡	¿	·	()	{	}	[]	-	-	-	—	«
exclamdown.case	questiondown.case	periodcentered.case	parenleft.case	parenright.case	braceleft.case	braceright.case	bracketleft.case	bracketright.case	hyphen.case	softhyphen.case	endash.case	emdash.case	guillemetleft.case
»	‹	›	@	,	´	˘	ˆ	˜	ˆ	¨	˙	˘	¨
guillemetright.case	guilsinglleft.case	guilsinglright.case	at.case	commaaccentcomb.case	acute.case	breve.case	caron.case	cedilla.case	circumflex.case	dieresis.case	dotaccent.case	grave.case	hungarumlaut.case
—	◌̇	◌◌	~	˘	¨	ˆ	¨	¨					
macron.case	ogonek.case	ring.case	tilde.case	cyrbreve.case	dblgrave.case	dieresisacute.case	dieresisgrave.case						
Denominators													
0	1	2	3	4	5	6	7	8	9	-	()	.
zero.dnom	one.dnom	two.dnom	three.dnom	four.dnom	five.dnom	six.dnom	seven.dnom	eight.dnom	nine.dnom	hyphen.dnom	parenleft.dnom	parenright.dnom	period.dnom
,	¢	\$											
comma.dnom	cent.dnom	dollar.dnom											
Fraction													
space.frac													
Ligatures													
Ł	ł	ı	Th	Ťh	Ṭh	ff	ffi	ffj	ffl	fi	fj	fl	ft
Ldot.latn_CAT	l.dot.latn_CAT	i.latn_TRK	T_h	Tcaron_h	Tcommaaccent_h	f_f	f_f_i	f_f_j	f_f_l	f_i	f_j	f_l	longs_t

Unencoded Glyphs

fh	fi	fl	ff
longs_h	longs_i	longs_l	longs_long

Lining Figures (Proportional)									
0	1	2	3	4	5	6	7	8	9
zero.lf	one.lf	two.lf	three.lf	four.lf	five.lf	six.lf	seven.lf	eight.lf	nine.lf

Numerators													
0	1	2	3	4	5	6	7	8	9	-	()	.
zero.numr	one.numr	two.numr	three.numr	four.numr	five.numr	six.numr	seven.numr	eight.numr	nine.numr	hyphen.numr	parenleft.numr	parenright.numr	period.numr

,	¢	\$
comma.numr	cent.numr	dollar.numr

Old Style Figures (Proportional)											
0	1	2	3	4	5	6	7	8	9	%	‰
zero.osf	one.osf	two.osf	three.osf	four.osf	five.osf	six.osf	seven.osf	eight.osf	nine.osf	percent.osf	perthousand.osf

Old Style Figures (Tabular)									
0	1	2	3	4	5	6	7	8	9
zero.tosf	one.tosf	two.tosf	three.tosf	four.tosf	five.tosf	six.tosf	seven.tosf	eight.tosf	nine.tosf

Other													
a	b	d	e	h	l	m	o	r	s	t	-	.	,
a.sups	b.sups	d.sups	e.sups	h.sups	l.sups	m.sups	o.sups	r.sups	s.sups	t.sups	hyphen.subs	period.subs	comma.subs

Unencoded Glyphs

-	.	,	□	·	¢	\$	¢	\$	ff	ffi	ffl	˘	ˆ
hyphen.sups	period.sups	comma.sups	.notdef	.null	cent.subs	dollar.subs	cent.sups	dollar.sups	ff	ffi	ffl	cyrbreve	cyrflex
“	„	¨	—	,									
dblgrave	dieresisacute	dieresisgrave	threequartersemdash	undercommaaccent									

Slashed Zero

0
zero.zero

Small Capitals

ı	À	Á	Ă	Ą	Ȧ	Ǻ	Ⱥ	Ȼ	Â	Ã	Ạ	Ằ	Ⱥ
idotaccent.sc	a.sc	aacute.sc	abreve.sc	abreveacute.sc	abrevedotbelow.sc	abrevegrave.sc	abrevehookabove.sc	abrevetilde.sc	acircumflex.sc	acircumflexacute.sc	acircumflexdotbelow.sc	acircumflexgrave.sc	acircumflexhookabove.sc
Ⱥ	Ä	Ạ	À	Ⱥ	Ā	Ą	Å	Ã	Æ	É	Ḃ	Ḃ	Ḃ
acircumflextilde.sc	adieresis.sc	adotbelow.sc	agrave.sc	ahookabove.sc	amacron.sc	aogonek.sc	aring.sc	atilde.sc	ae.sc	aeacute.sc	b.sc	bdotaccent.sc	c.sc
Ć	Č	Ç	Ĉ	Ċ	D	Ð	Ǿ	Đ	Đ	È	É	Ě	Ě
ccacute.sc	ccaron.sc	ccedilla.sc	ccircumflex.sc	cdotaccent.sc	d.sc	eth.sc	dcaron.sc	dcroat.sc	ddotaccent.sc	e.sc	eacute.sc	ebreve.sc	ecaron.sc
Ê	Ë	Ė	È	Ě	Ë	Ë	È	Ë	È	È	È	È	È
ecircumflex.sc	ecircumflexacute.sc	ecircumflexdotbelow.sc	ecircumflexgrave.sc	ecircumflexhookabove.sc	ecircumflextilde.sc	edieresis.sc	edotaccent.sc	edotbelow.sc	egrave.sc	ehookabove.sc	emacron.sc	eogonek.sc	etilde.sc

Unencoded Glyphs

F f.sc	Ḟ fdotaccent.sc	G g.sc	Ğ gbreve.sc	Ĝ gcircumflex.sc	Ḡ gcommaaccent.sc	Ġ gdotaccent.sc	H h.sc	Ĥ hbar.sc	Ĥ hcircumflex.sc	I i.sc	İ idotless.sc	Í iacute.sc	İ ibreve.sc
Î icircumflex.sc	Ï idieresis.sc	Ï idotbelow.sc	Ì igrave.sc	Ï ihookabove.sc	IJ ij.sc	Ī imacron.sc	Ĳ iogonek.sc	Ĩ itilde.sc	J j.sc	Ĵ jcircumflex.sc	K k.sc	Ḷ kcommaaccent.sc	L l.sc
Ł lacute.sc	Ł̇ lcaron.sc	Ł̣ lcommaaccent.sc	Ł̇ ldot.sc	Ł̇ lslash.sc	M m.sc	Ṁ mdotaccent.sc	N n.sc	Ñ nacute.sc	Ñ̇ ncaron.sc	Ṛ ncommaaccent.sc	Ŋ eng.sc	Ñ̃ ntilde.sc	O o.sc
Ó oacute.sc	Ö̇ obreve.sc	Ô ocircumflex.sc	Õ̇ ocircumflexacute.sc	Ô̇ ocircumflexdotbelow.sc	Õ̇ ocircumflexgrave.sc	Õ̇ ocircumflexhookabove.sc	Õ̃ ocircumflextilde.sc	Ö odieresis.sc	Ọ odotbelow.sc	Ò ograve.sc	Ỏ ohookabove.sc	Ơ ohorn.sc	Ớ ohornacute.sc
Ơ̇ ohorndotbelow.sc	Ờ ohorngrave.sc	Ở ohornhookabove.sc	Ỡ ohorntilde.sc	Ő ohungarumlaut.sc	Ō omacron.sc	Ø oslash.sc	Ø̇ oslashacute.sc	Õ̃ otilde.sc	Œ oe.sc	P p.sc	Ṗ pdotaccent.sc	Ɔ thorn.sc	Q q.sc
R r.sc	Ŕ racute.sc	Ř̇ rcaron.sc	Ṛ rcommaaccent.sc	S s.sc	Ś sacute.sc	Ṧ scaron.sc	Ş̇ scedilla.sc	Ŝ scircumflex.sc	Ş̇ scommaaccent.sc	Ŝ̇ sdotaccent.sc	T t.sc	Ƨ tbar.sc	Ť tcaron.sc
Ṛ tcommaaccent.sc	Ṛ̇ tdotaccent.sc	Ṛ̇ tdotbelow.sc	U u.sc	Ú uacute.sc	Ů ubreve.sc	Û ucircumflex.sc	Ü udieresis.sc	Ụ udotbelow.sc	Ù ugrave.sc	Ủ̇ uhookabove.sc	Ư uhorn.sc	Ứ uhornacute.sc	Ự uhorndotbelow.sc

Unencoded Glyphs

Û	Ů	Ũ	Ű	Ū	Ų	Ŭ	Ů	V	W	Ŵ	Ŷ	Ẁ	Ẃ
uhorngrave.sc	uhornhookabove.sc	uhorntilde.sc	uhungarumlaut.sc	umacron.sc	uogonek.sc	uring.sc	utilde.sc	v.sc	w.sc	wacute.sc	wcircumflex.sc	wdieresis.sc	wgrave.sc
X	Y	Ý	ÿ	ÿ	Ÿ	ÿ	ÿ	ÿ	Z	Ž	Ž	Ž	À
x.sc	y.sc	yacute.sc	ycircumflex.sc	ydieresis.sc	ydotbelow.sc	ygrave.sc	yhookabove.sc	ytilde.sc	z.sc	zacute.sc	zaron.sc	zdotaccent.sc	a-cy.sc
Б	В	Г	Ґ	Ғ	Д	Е	Ё	Ж	З	И	Й	К	К
be-cy.sc	ve-cy.sc	ge-cy.sc	gje-cy.sc	gheupturn-cy.sc	de-cy.sc	ie-cy.sc	io-cy.sc	zhe-cy.sc	ze-cy.sc	ii-cy.sc	iishort-cy.sc	ka-cy.sc	kje-cy.sc
Л	М	Н	О	П	Р	С	Т	У	Ў	Ф	Х	Ч	Ц
el-cy.sc	em-cy.sc	en-cy.sc	o-cy.sc	pe-cy.sc	er-cy.sc	es-cy.sc	te-cy.sc	u-cy.sc	ushort-cy.sc	ef-cy.sc	ha-cy.sc	che-cy.sc	tse-cy.sc
Ш	Щ	Ъ	Ь	Ъ	Ы	Ь	Ъ	Ѕ	Є	Э	І	İ	Ј
sha-cy.sc	shcha-cy.sc	dzhe-cy.sc	softsign-cy.sc	hardsign-cy.sc	yeru-cy.sc	lje-cy.sc	nje-cy.sc	dze-cy.sc	e-cy.sc	ereversed-cy.sc	i-cy.sc	yi-cy.sc	je-cy.sc
Ѧ	Ю	Я	Ѧ	Ѧ	Ѧ	Ѧ	Ѧ	Ѧ	Ѧ	Ѧ	Ѧ	Ѧ	Ѧ
tshe-cy.sc	iu-cy.sc	ia-cy.sc	dje-cy.sc	yat-cy.sc	fita-cy.sc	izhitsa-cy.sc	ghestroke-cy.sc	zhedescender-cy.sc	zedescender-cy.sc	kadescender-cy.sc	kaverticallstroke-cy.sc	kabashkir-cy.sc	endescender-cy.sc
Ç	Χ	Ч	Һ	І	Ч	Ә	Й	Ө	Ү	Α	Β	Γ	Δ
esdescender-cy.sc	hadescender-cy.sc	cheverticalstroke-cy.sc	shha-cy.sc	palochka-cy.sc	chekhakassian-cy.sc	schwa-cy.sc	imacron-cy.sc	obarred-cy.sc	umacron-cy.sc	alpha.sc	beta.sc	gamma.sc	delta.sc

Unencoded Glyphs

Ε	Ζ	Η	Θ	Ι	Κ	Λ	Μ	Ν	Ξ	Ο	Π	Ρ	Σ
epsilon.sc	zeta.sc	eta.sc	theta.sc	iota.sc	kappa.sc	lambda.sc	mu.sc	nu.sc	xi.sc	omicron.sc	pi.sc	rho.sc	sigma.sc
Τ	Υ	Φ	Χ	Ψ	Ω	ΐ	ϊ	ΐ	ΰ	Ϛ	ϛ	Ϝ	Ϟ
tau.sc	upsilon.sc	phi.sc	chi.sc	psi.sc	omega.sc	iotatonos.sc	iotadieresis.sc	iotadieresis-tonos.sc	upsilontonos.sc	upsilondieresis.sc	omicrontonos.sc	omegatonos.sc	alphatonos.sc
Έ	Ή	!	ι	?	¿	&	,	´	˘	ˇ	¸	ˆ	¨
epsilontonos.sc	etatonos.sc	exclam.sc	exclamdwn.sc	question.sc	questiondown.sc	ampersand.sc	commaaccentcomb.sc	acute.sc	breve.sc	caron.sc	cedilla.sc	circumflex.sc	dieresis.sc
·	¸	“	—	ć	◦	~	Υ	Ϛ	“	“	“		
dotaccent.sc	grave.sc	hungarumlaut.sc	macron.sc	ogonek.sc	ring.sc	tilde.sc	ustrait-cy.sc	ustraitstroke-cy.sc	dblgrave.sc	dieresisacute.sc	dieresisgrave.sc		

Smallcaps Ligatures

Ł
ldot.latn_CAT.sc